

APP CRS	Rwy Idg	2801
113°	TDZE	833
	Apt Elev	833

RNAV (GPS) RWY 11

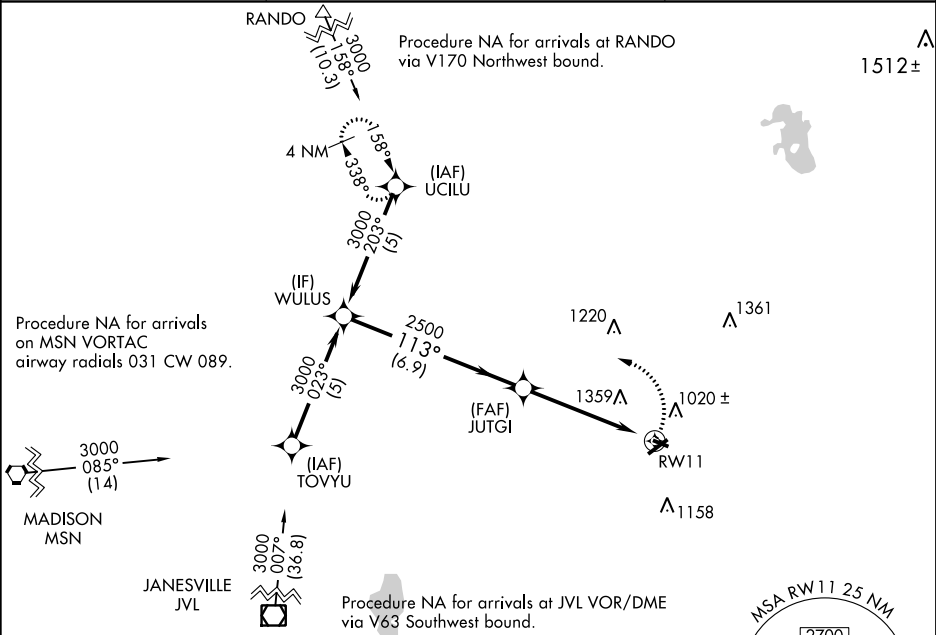
WATERTOWN MUNI (RYV)

RNP APCH

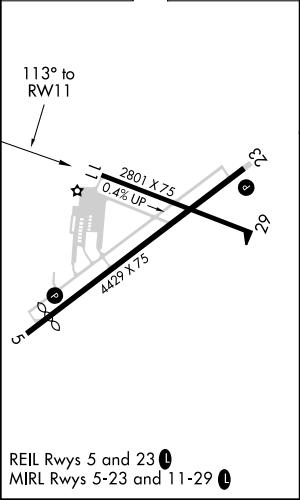
When local altimeter setting not received, use Dodge County altimeter setting and increase all MDA 60 feet, increase LNAV visibility Cat. C and D ¼ mile, increase Circling visibility Cat. C ¼ mile. VDP NA when using Dodge County altimeter setting. Circling Rwy 23 NA at night.







MISSED APPROACH: Climbing left turn to 3000 direct UCILU and hold.

AWOS-3 119.975	MADISON APP CON ★ 119.15 343.7	UNICOM 122.8 (CTAF) 0
-------------------	-----------------------------------	--------------------------



ELEV 833	TDZE 833
----------	----------



					
					
2.4 NM		2.7 NM		6.9 NM	
2.4 NM to RW11		3.04 TCH 40		113°	
RW11		JUTGI		WULUS	
2500		2500		3000	
Procedure Turn NA					
CATEGORY	A	B	C	D	
LNAV MDA	1640-1 807 (900-1)	1640-1¼ 807 (900-1¼)	1640-2¼ 807 (900-2¼)	1640-2½ 807 (900-2½)	
CIRCLING	1640-1 807 (900-1)	1640-1¼ 807 (900-1¼)	1640-2¼ 807 (900-2¼)	1720-3 887 (900-3)	