

APP CRS
054°

Rwy Idg
TDZE
Apt Elev

4239
821
833

RNP APCH.

▼

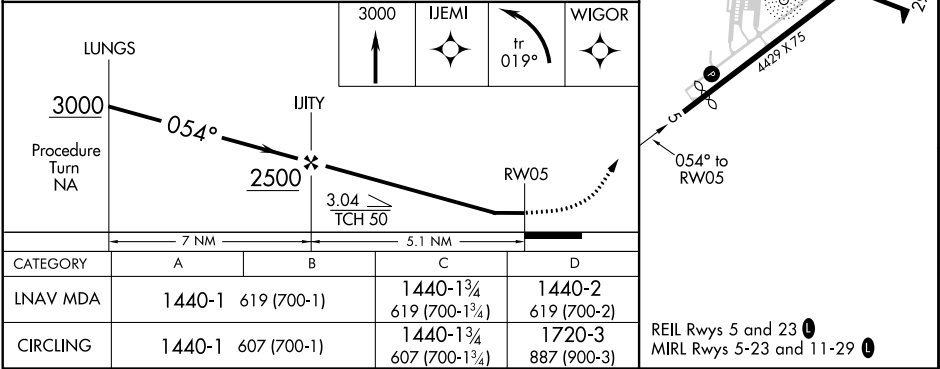
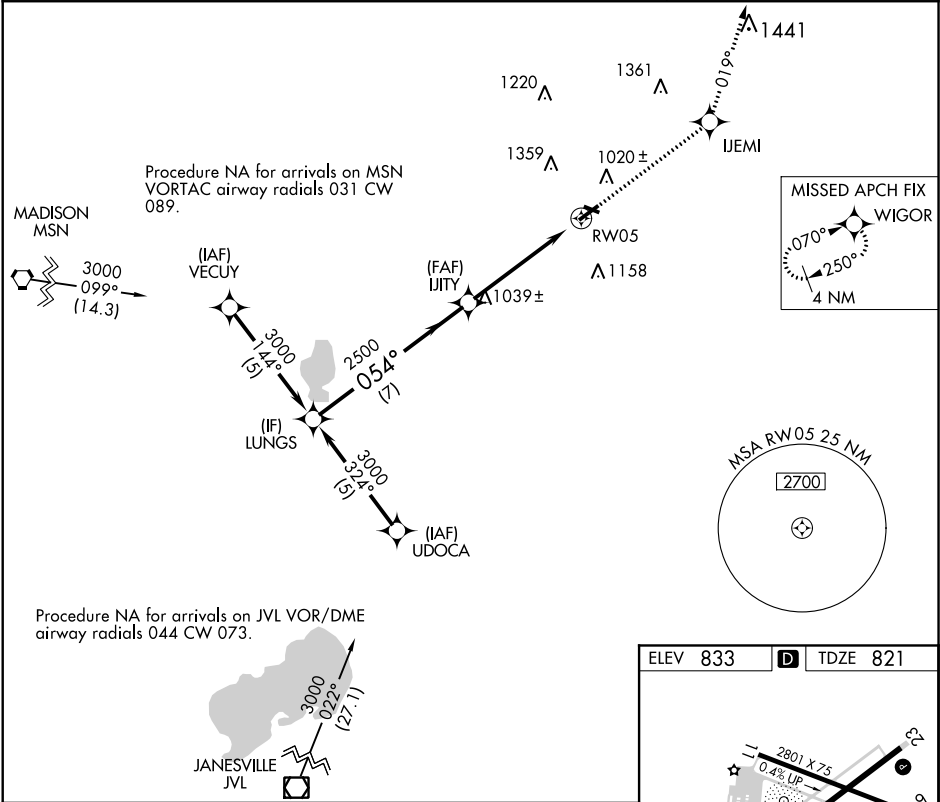
Rwy 5 helicopter visibility reduction below ¾ SM NA. When local altimeter setting not received, use Dodge County altimeter setting. Circling Rwy 23 NA at night.

MISSED APPROACH: Climb to 3000 direct IJEMI and left turn on 019° track to WIGOR and hold.

AWOS-3
119.975

MADISON APP CON ★
119.15 343.7

UNICOM
122.8 (CTAF) ①



EC-3, 03 DEC 2020 to 31 DEC 2020

EC-3, 03 DEC 2020 to 31 DEC 2020