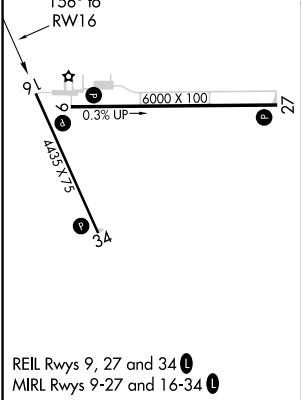
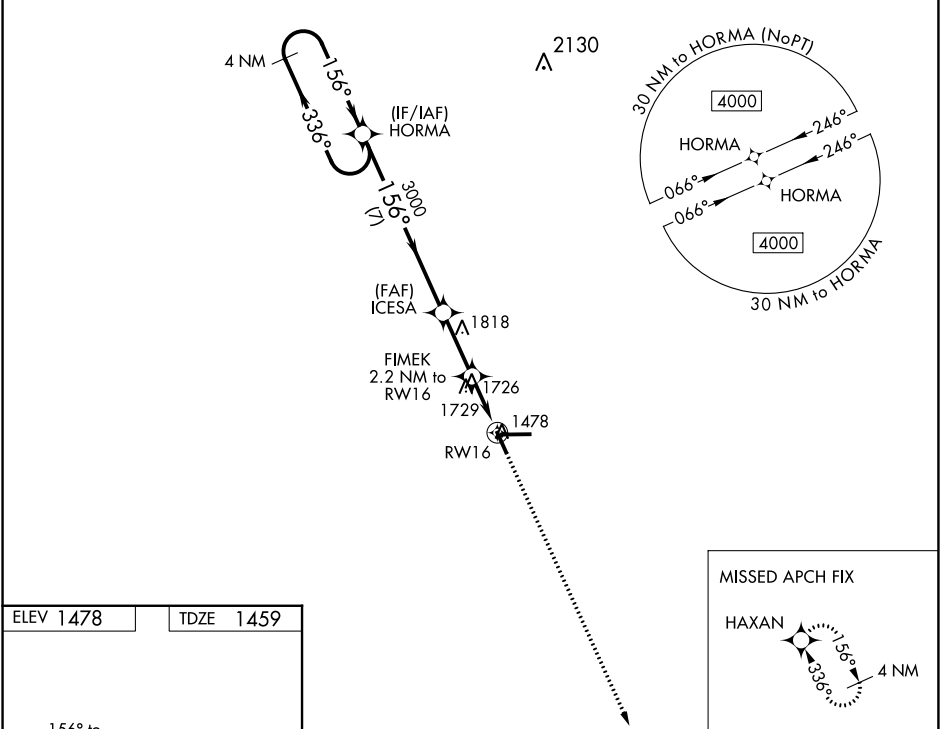


WAAS CH 86231 W16A	APP CRS 156°	Rwy Idg TDZE Apt Elev	4435 1459 1478
--	------------------------	-----------------------------	---

RNAV (GPS) RWY 16
TAYLOR COUNTY (MDZ)

RNP APCH.	When local altimeter setting not received, use Merrill altimeter setting and increase all MDA 100 feet and increase all Cat C/D visibility ¼ mile. Rwy 16 helicopter visibility reduction below ¾ SM NA. VDP NA when using Merrill altimeter setting.	MISSED APPROACH: Climb to 4000 direct HAXAN and hold.
-----------	---	--

AWOS-3 119.025	MINNEAPOLIS CENTER 124.4 317.7	UNICOM 122.8 (CTAF) 0
--------------------------	--	---------------------------------



4 NM Holding Pattern HORMA				VGSI and descent angles not coincident (VGSI Angle 3.00/TCH 37).				4000	HAXAN
4000 ← 336°				156° →				↑	✧
				156°					
				ICESA					
				3000					
				3.00° TCH 45					
				2200					
				7 NM					
				2.5 NM					
				0.5 NM					
				1.7 NM					
				FIMEK 2.2 NM to RWY 16					
				1.7 NM to RWY 16					
				RWY 16					
CATEGORY				A	B	C	D		
LP MDA				2040-1	581 (600-1)	2040-1¾	581 (600-1¾)		
LNAV MDA				2060-1	601 (600-1)	2060-1¾	601 (600-1¾)		
CIRCLING				2060-1	582 (600-1)	2060-1¾ 582 (600-1¾)	2080-2 602 (700-2)		

EC-3, 03 DEC 2020 to 31 DEC 2020

EC-3, 03 DEC 2020 to 31 DEC 2020