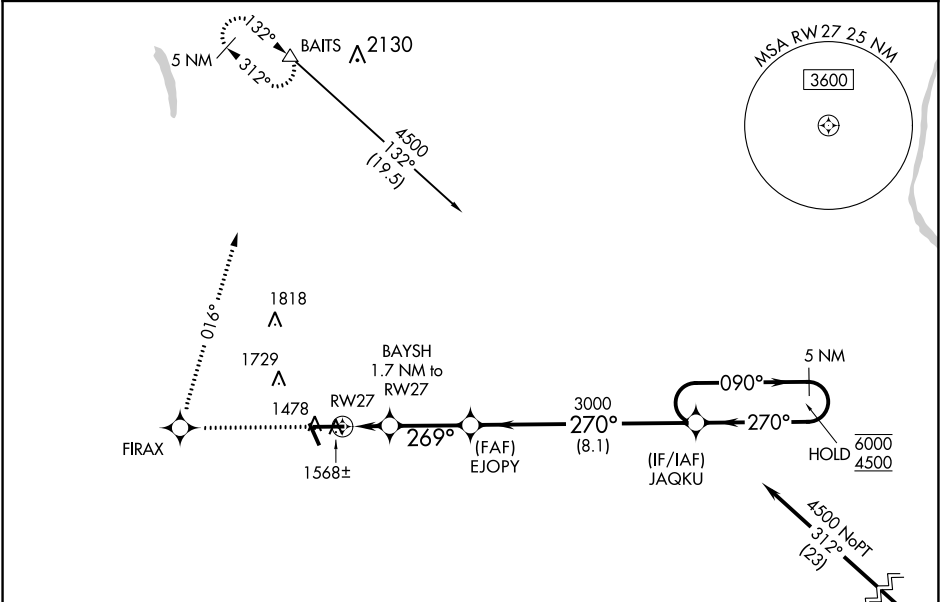


WAAS CH 66011 W27A	APP CRS 269°	Rwy Idg TDZE 1478 Apt Elev 1478
--	------------------------	---

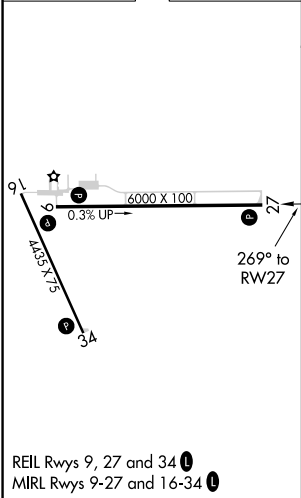
RNAV (GPS) RWY 27
TAYLOR COUNTY (MDZ)

RNP APCH.	MISSED APPROACH: Climb to 4500 direct FIRAX and right turn on 016° track to BAITs and hold.
 For uncompensated Baro-VNAV systems, LNAV/VNAV NA below -17°C or above 45°C.	

AWOS-3 119.025	MINNEAPOLIS CENTER 124.4 317.7	UNICOM 122.8 (CTAF) 0
--------------------------	--	---------------------------------



ELEV 1478	TDZE 1478
-----------	-----------



4500	FIRAX	016° tr	BAITs	JAQKU	5 NM Holding Pattern
*LNAV only.	BAYSH 1.7 NM to RWY 27	EJOPY 3000	JAQKU	5 NM Holding Pattern	
*1.1 NM to RWY 27	*2060	269°	270°	090°	6000
1.1 NM	0.6 NM	2.9 NM	8.1 NM	270°	4500
GP 3.00°	TCH 46				
CATEGORY	A	B	C	D	
LPV DA		1778-1	300 (300-1)		
LNAV/VNAV DA		1814-1 ¼	336 (400-1 ¼)		
LNAV MDA	1880-1	402 (500-1)	1880-1 ¼	402 (500-1 ¼)	
CIRCLING	1940-1	462 (500-1)	1940-1 ½	2080-2	602 (700-2)