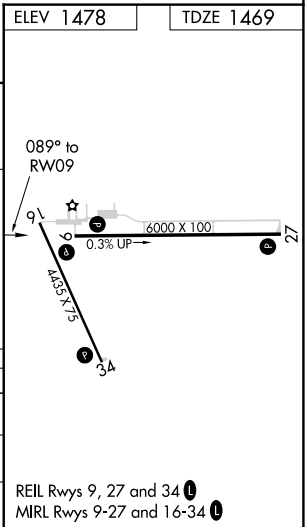
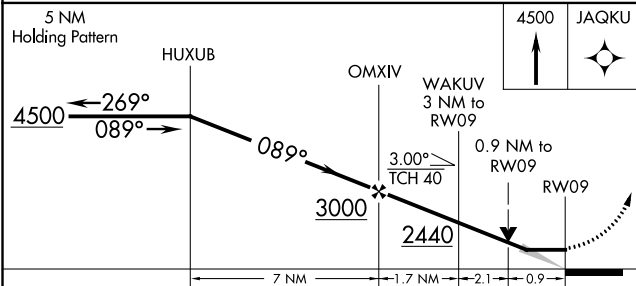
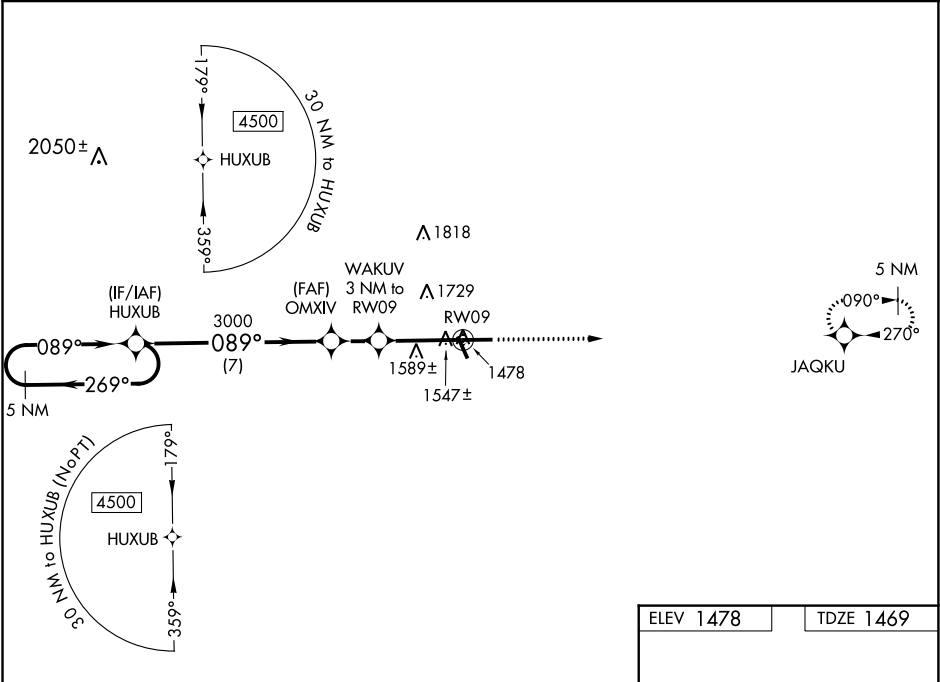


WAAS CH 99331 W09A	APP CRS 089°	Rwy Idg TDZE 1469 Apt Elev 1478	6000
--	------------------------	---	-------------

RNAV (GPS) RWY 9
TAYLOR COUNTY (MDZ)

RNP APCH.	When local altimeter setting not received, use Merrill altimeter setting and increase all MDA 100 feet, and increase LP Cat C, D visibilities ¼ mile, and increase LNAV Cat C, D visibilities ⅓ mile. VDP NA when using Merrill altimeter setting.	MISSED APPROACH: Climb to 4500 direct JAQKU and hold.
-----------	--	--

AWOS-3 119.025	MINNEAPOLIS CENTER 124.4 317.7	UNICOM 122.8 (CTAF) 0
--------------------------	--	---------------------------------



CATEGORY	A	B	C	D
LP MDA	1800-1	331 (400-1)		
LNAV MDA	1840-1	371 (400-1)		
CIRCLING	1940-1	462 (500-1)	1940-1½ 462 (500-1½)	2080-2 602 (700-2)

EC-3, 03 DEC 2020 to 31 DEC 2020

EC-3, 03 DEC 2020 to 31 DEC 2020