

|  |                        |   |
|--|------------------------|---|
| WAAS<br>CH <b>78428</b><br><b>W08A</b> | APP CRS<br><b>080°</b> | Rwy Idg <b>4601</b><br>TDZE <b>831</b><br>Apt Elev <b>836</b> |
|--|------------------------|---|

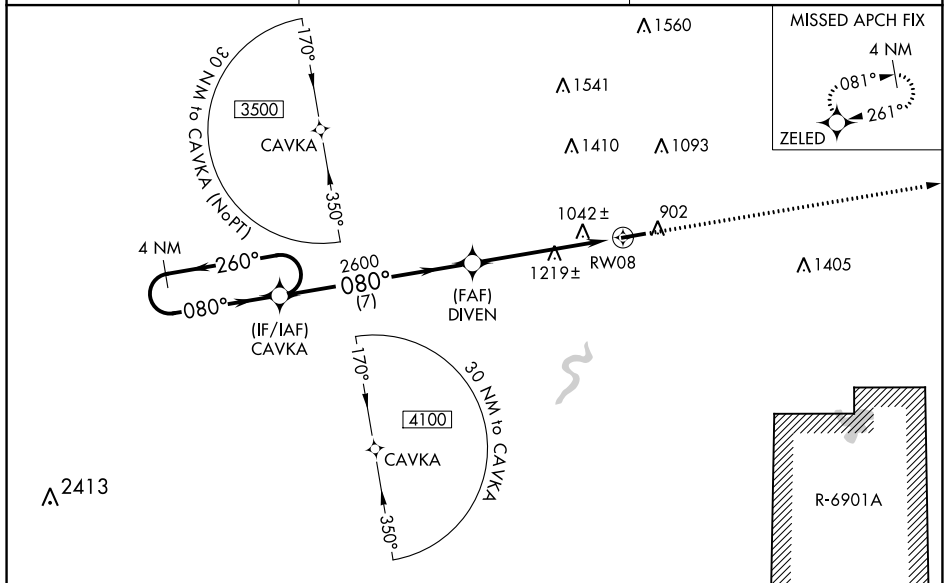
# RNAV (GPS) RWY 8

## BLACK RIVER FALLS AREA (BCK)

**V** **A** Baro-VNAV NA when using La Crosse altimeter setting. For uncompensated Baro-VNAV systems, LNAV/VNAV NA below -16°C (4°F) or above 38° C (100°F). DME/DME RNP-0.3 NA. Visibility reduction by helicopters NA. VDP NA with La Crosse altimeter setting. When local altimeter setting not received, use La Crosse altimeter setting and increase all DA 91 feet and all MDA 100 feet and increase LPV all Cats visibility to 1 ½ mile, LNAV/VNAV all Cats to 2 ¼ mile, LNAV Cat B to 1 ¼ mile, Cat C/D to 2 mile, and Circling Cat B to 1 ¼ mile, Cat C to 2 ¼ mile, and Cat D to 2 ½ mile.

**MISSED APPROACH:**  
Climb to 3500 direct  
ZELED and hold.

|                            |  |                        |
|----------------------------|--|------------------------|
| AWOS-3PT<br><b>119.125</b> | MINNEAPOLIS CENTER<br><b>128.6 363.0</b> | CTAF<br><b>122.9 0</b> |
|----------------------------|--|------------------------|

[illegible]