

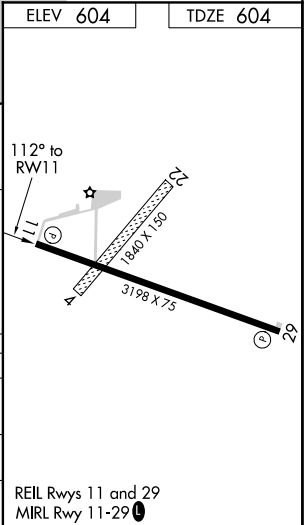
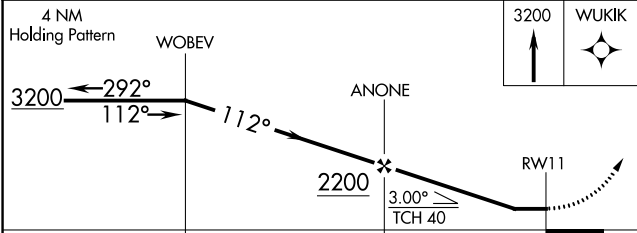
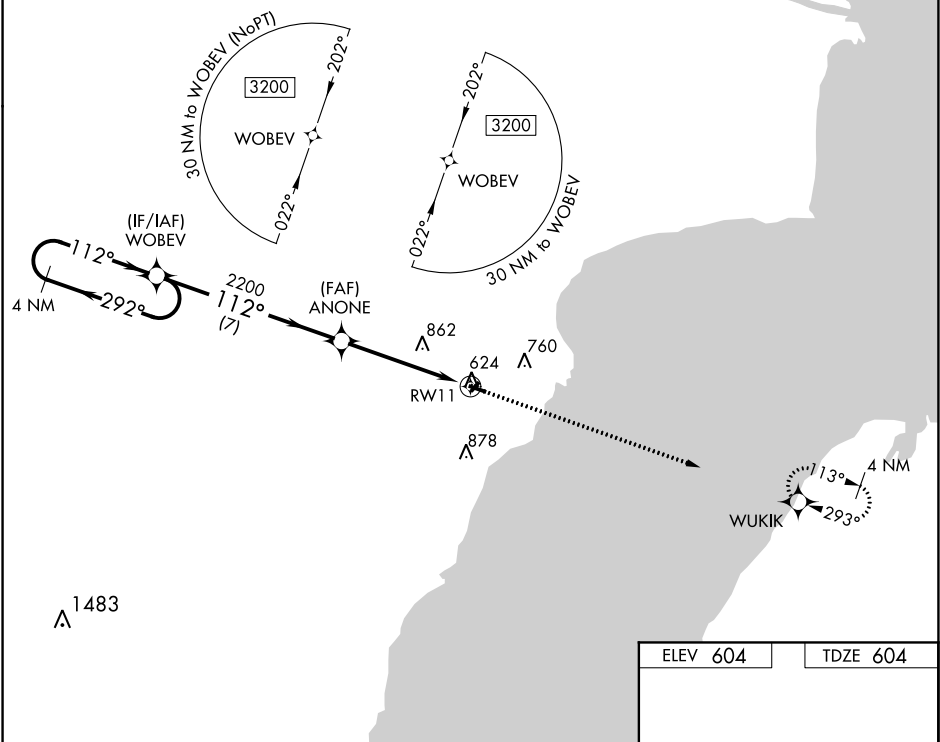
WAAS CH <b>99629</b> <b>W11A</b>	APP CRS <b>112°</b>	Rwy Idg <b>3198</b> TDZE <b>604</b> Apt Elev <b>604</b>
--	------------------------	---

RNAV (GPS) RWY 11

OCONTO-J DOUGLAS BAKE MUNI (OCQ)

<div><div>▼</div><div>NA</div></div>	Use Menominee, MI altimeter setting; when not received, use Green Bay altimeter setting and increase all DA/MDA 40 feet; increase Circling Cat C visibility 1⁄8 mile. Procedure NA at night. DME/DME RNP-0.3 NA. Visibility reduction by helicopters NA.	MISSED APPROACH: Climb to 3200 direct WUKIK and hold.
--------------------------------------	--	--

AWOS-3 <b>120.925</b>	MNM AWOS-3PT <b>109.6</b>	GREEN BAY APP CON ★ <b>120.3 338.2</b>	UNICOM <b>122.8 (CTAF) 0</b>
--------------------------	------------------------------	---	---------------------------------



CATEGORY	A	B	C	D
LP MDA	1200-1	596 (600-1)	1200-1¾ 596 (600-1¾)	NA
LNAV MDA	1220-1	616 (700-1)	1220-1¾ 616 (700-1¾)	NA
CIRCLING	1220-1	616 (700-1)	1240-1¾ 636 (700-1¾)	NA

EC-3, 03 DEC 2020 to 31 DEC 2020

EC-3, 03 DEC 2020 to 31 DEC 2020