

WAAS CH 57930 W22A	APP CRS 220°	Rwy Idg 3600 TDZE 1171 Apt Elev 1171
--	------------------------	---

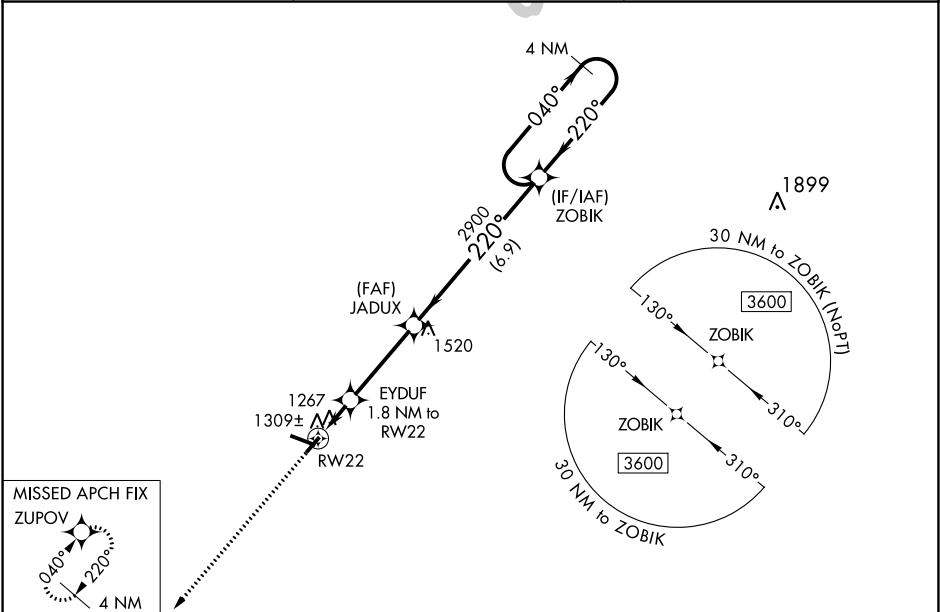
RNAV (GPS) RWY 22

IOWA COUNTY (MRJ)

Baro-VNAV NA when using Platteville altimeter setting. For uncompensated Baro-VNAV systems, LNAV/VNAV NA below -17°C (2°F) or above 54°C (130°F). When local altimeter setting not received, use Platteville altimeter setting and increase all DA 55 feet, increase LPV all Cats visibility ½ mile and LNAV/VNAV all Cats visibility ¼ mile, increase all MDA 60 feet, and LNAV Cat C visibility ¼ mile. DME/DME RNP-0.3 NA. Helicopter visibility reduction below ¾ SM NA.

MISSED APPROACH:
Climb to 3500 direct ZUPOV and hold.

AWOS-3 118.525	CHICAGO CENTER 133.95 281.4	UNICOM 122.8 (CTAF) 0
--------------------------	---------------------------------------	---------------------------------



ELEV 1171	TDZE 1171
-----------	-----------

3500 ZUPOV VGSI and RNAV glidepath not coincident (VGSI Angle 3.00/TCH 30).

4 NM Holding Pattern

GP 3.00° TCH 40

REIL Rwy 11 and 29
MRL Rwy 4-22 and 11-29

3500	ZUPOV	EYDUF 1267 1.8 NM to RW22	JADUX 1520 1.2 NM to RW22	ZOBIK 2900 6.9 NM	3600
		*LNAV only		*1780	
		1.2 NM to RW22		3.5 NM	
		0.6 NM		6.9 NM	
CATEGORY	A	B	C	D	
LPV DA	1371-¾ 200 (200-¾)			NA	
LNAV/VNAV DA	1479-1 308 (400-1)			NA	
LNAV MDA	1580-1	409 (500-1)	1580-1½ 409 (500-1½)	NA	
CIRCLING	1620-1 449 (500-1)	1640-1 469 (500-1)	1640-1½ 469 (500-1½)	NA	