

APP CRS	Rwy Idg	4001
179°	TDZE	620
	Apt Elev	622

RNAV (GPS) RWY 18

TAYLORVILLE MUNI (TAZ)

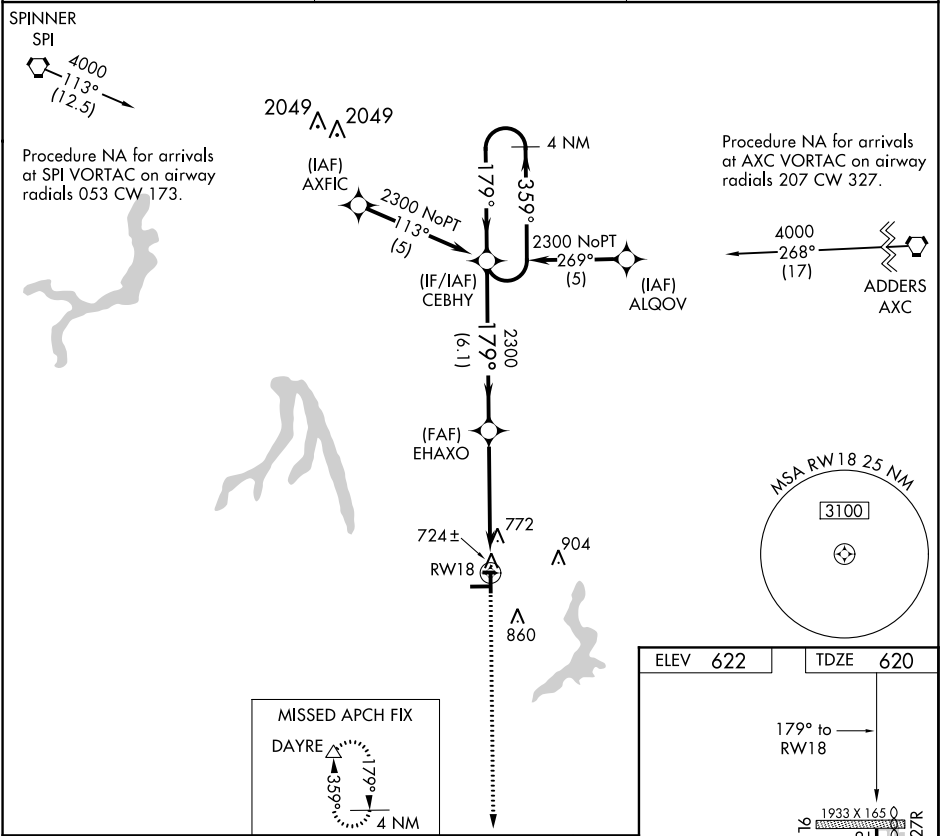
▼

▲

DME/DME RNP-0.3 NA. Visibility reduction by helicopters NA. When local altimeter setting not received, use Springfield altimeter setting and increase all MDA 80 feet, LNAV Cat C visibility ¼ mile and Circling Cat C visibility ½ mile.

MISSED APPROACH: Climb to 2500 direct DAYRE and hold.

AWOS-3 123.875 395.0	SPRINGFIELD APP CON ★ 126.15 323.0	UNICOM 122.8 (CTAF) 0
-------------------------	---------------------------------------	--------------------------



4 NM Holding Pattern

CEBHY

EHAXO

2500 DAYRE

2300

359°

179°

2300

3.05°

TCH 39

6.1 NM

5.1 NM

RW18

ELEV 622

TDZE 620

179° to RW18

1933 X 165 0

81

4001 X 75

122

36

9R

3501 X 60

27R

CATEGORY	A	B	C	D
LNAV MDA	1080-1	460 (500-1)	1080-1¼ 460 (500-1¼)	NA
CIRCLING	1160-1	538 (600-1)	1160-1½ 538 (600-1½)	NA

REIL Rwy 9R, 27L and 18 0

MIRL Rwy 9R-27L and 18-36 0