

WAAS CH 82425 W14A	APP CRS 141°	Rwy Idg TDZE 998 Apt Elev 998
--	------------------------	---

RNAV (GPS) RWY 14

NEW RICHMOND RGNL (R.NH)

RNP APCH.

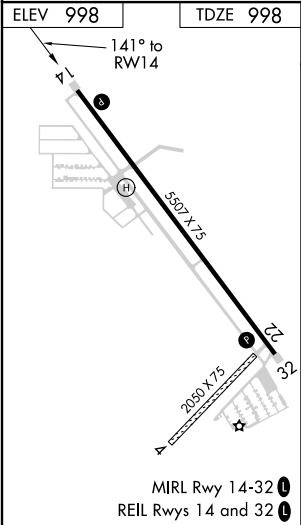
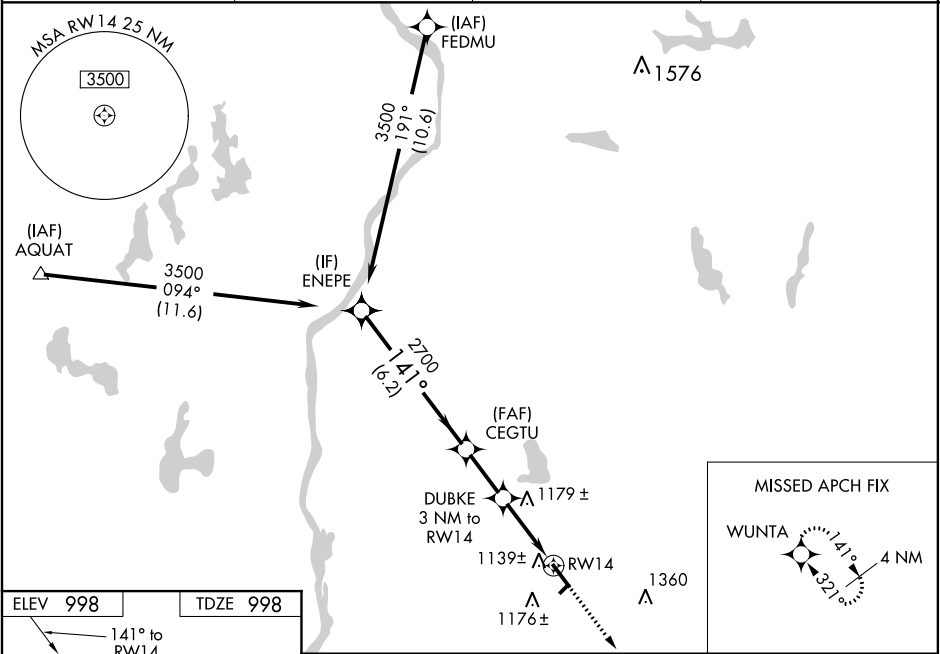
▼

▲

Baro-VNAV NA when using Osceola altimeter setting. For uncompensated Baro-VNAV systems, LNAV/VNAV NA below -16°C (4°F) or above 37°C (98°F). Rwy 14 helicopter visibility reduction below ¾ SM NA. When local altimeter setting not received, use Osceola altimeter setting and increase all DA/MDA 40 feet; Circling visibility Cats C and D ¼ SM.

MISSED APPROACH: Climb to 3500 direct WUNTA and hold.

AWOS-3 120.0	MINNEAPOLIS APP CON 121.2 335.65	GCO 121.725	UNICOM 122.975 (CTAF) 0
------------------------	--	-----------------------	-----------------------------------



VGSi and RNAV glidepath not coincident (VGSi angle 3.00/TCH40).				3500	WUNTA
				↑	✧
				*LNAV only	
				ENEPE	CEGTU
				3500	2700
				GP 3.00°	DUBKE 3 NM to RW14
				TCH 50	2000*
				6.2 NM	2.2 NM
				3 NM	RW14
CATEGORY	A	B	C	D	
LPV DA	1272-1 274 (300-1)				
LNAV/VNAV DA	1320-1 322 (400-1)				
LNAV MDA	1440-1	442 (500-1)	1440-1¾	442 (500-1¾)	
CIRCLING	1540-1	542 (600-1)	1660-1¾	1660-2	
			662 (700-1¾)	662 (700-2)	