

APP CRS
001°

Rwy Idg
3999

TDZE
394

Apt Elev
400

RNAV (GPS) RWY 36

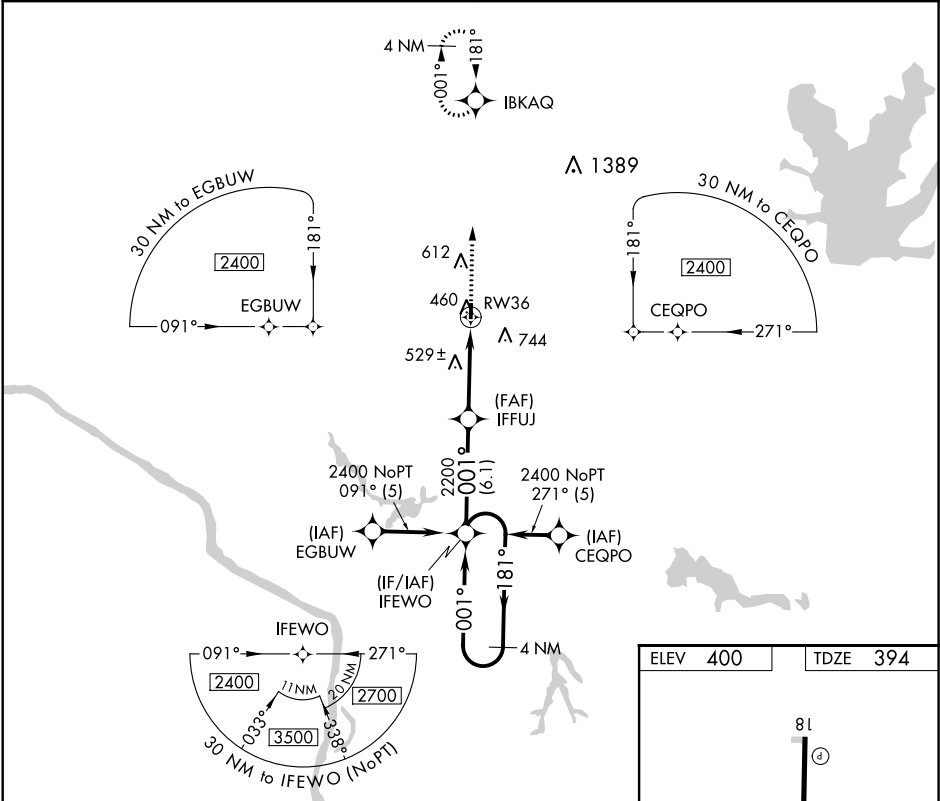
PINCKNEYVILLE-DU QUOIN (PJY)

NA

Use Carbondale-Murphysboro altimeter setting; when not received, use Sparta Community-Hunter Field altimeter setting and increase all MDA 40 feet and LNAV Cat C/D visibility ⅛ mile. DME/DME RNP-0.3 NA. Rwy 36 helicopter visibility below ¾ SM NA.

MISSED APPROACH:
Climb to 2400 direct IBKAQ and hold

| | |
|--|--------------------------------|
| KANSAS CITY CENTER 127.475 346.275 | UNICOM 122.8(CTAF) 0 |
|--|--------------------------------|



4 NM Holding Pattern

VGSI and descent angles not coincident (VGSI Angle 3.00/TCH 20).

2400 IBKAQ

IFFUJ

3.05° TCH 40

RW36

2200

6.1 NM

5.5 NM

| CATEGORY | A | B | C | D |
|----------|-------------------|---------------------|---------------------|----------------------|
| LNAV MDA | 820-1 426 (500-1) | 820-1¼ 426 (500-1¼) | 960-1½ 560 (600-1½) | 1080-2¼ 680 (700-2¼) |
| CIRCLING | 960-1 560 (600-1) | | | |

