

WAAS CH <b>86937</b> <b>W18A</b>	APP CRS <b>183°</b>	Rwy Idg TDZE <b>654</b> Apt Elev <b>654</b>	<b>5999</b>
--	------------------------	---	-------------

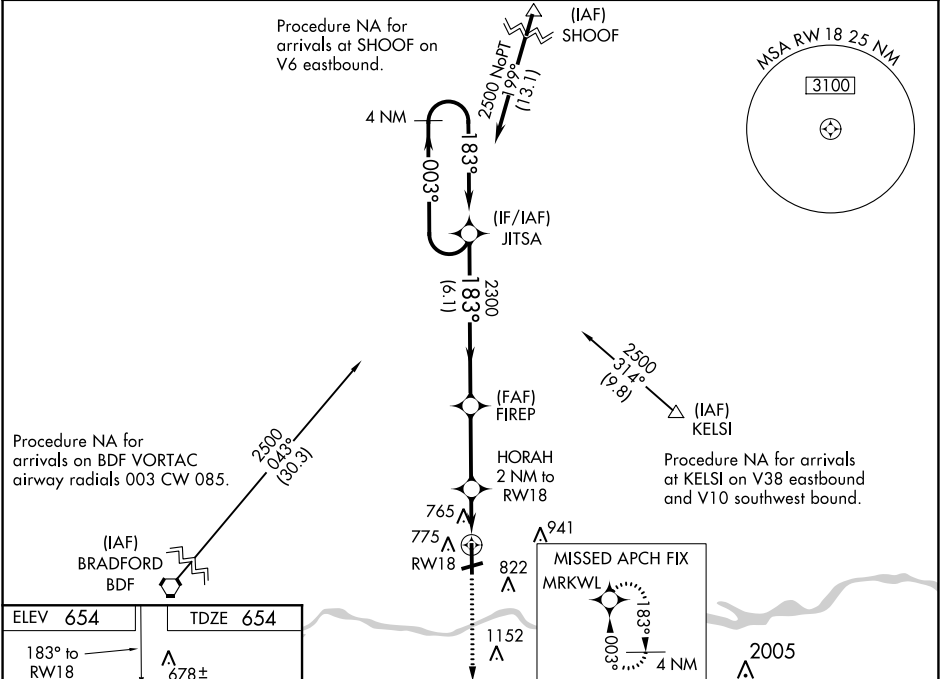
RNAV (GPS) RWY 18





ILLINOIS VALLEY RGNL-WALTER A DUNCAN FIELD (VYS)

**⚠** DME/DME RNP-0.3 NA. When local altimeter setting not received, use Marshall County altimeter setting and increase all DA 62 feet and all MDA 80 feet, increase LNAV Cats C/D visibility to 1½, Circling Cat C visibility to 2 and Circling Cat D visibility to 3. VDP and Baro-VNAV NA with Marshall County altimeter setting. Helicopter visibility reduction below ¾ SM NA.

MISSED APPROACH: Climb to 2500 direct MRKWL and hold.

AWOS-3 <b>120.025</b>	CHICAGO CENTER <b>123.75 259.1</b>	UNICOM <b>123.0 (CTAF) 0</b>
--------------------------	---------------------------------------	---------------------------------



2500		MRKWL		4 NM Holding Pattern	
					
*LNAV only.		HORAH 2 NM to RW18		JITSA	
		*1 NM to RW18		003° → 2500	
RW18		*1320		← 183°	
		1 NM		2300	
1 NM		3 NM		6.1 NM	
CATEGORY		A		B	
LPV DA		904-1		250 (300-1)	
LNAV/VNAV DA		926-1		272 (300-1)	
LNAV MDA		1020-1		366 (400-1)	
CIRCLING		1120-1 466 (500-1)		1240-1 586 (600-1)	
		1260-1¾ 606 (700-1¾)		1460-2½ 806 (900-2½)	

EC-3, 03 DEC 2020 to 31 DEC 2020

EC-3, 03 DEC 2020 to 31 DEC 2020