

WAAS CH 82037 W36A	APP CRS 003°	Rwy Idg 5999 TDZE 650 Apt Elev 654
--	------------------------	---

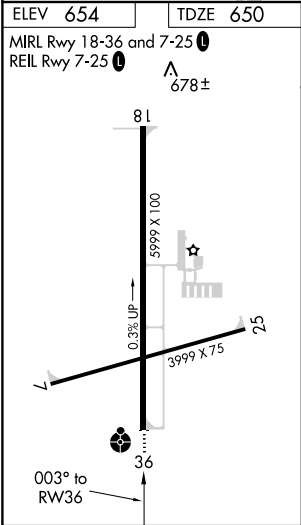
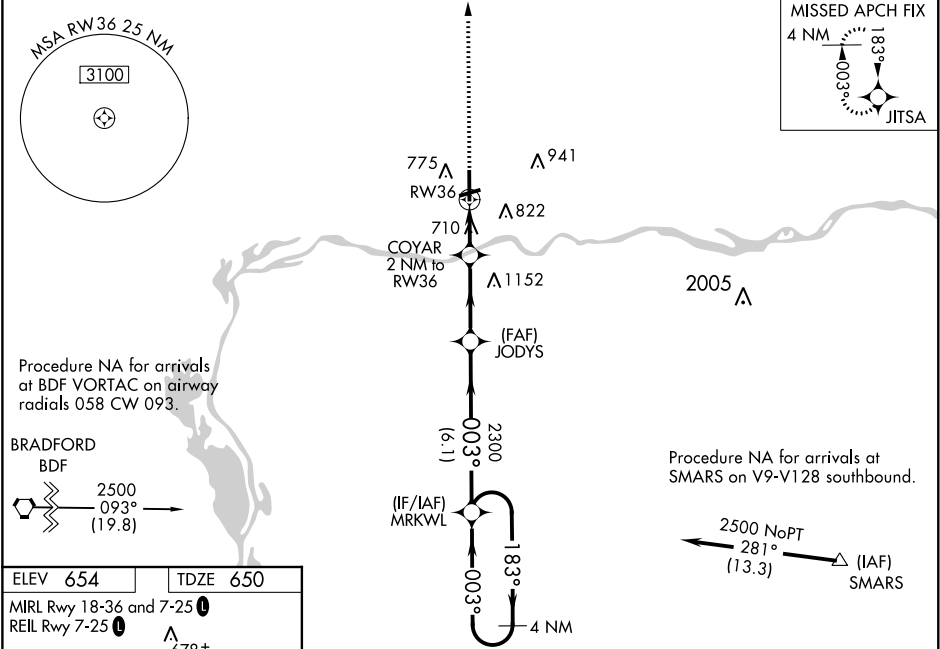
RNAV (GPS) RWY 36



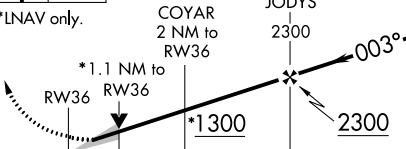
ILLINOIS VALLEY RGNL-WALTER A DUNCAN FIELD (VYS)

For uncompensated Baro-VNAV systems, LNAV/VNAV NA below -16°C (4°F) or above 54°C (130°F). DME/DME RNP-0.3 NA. When local altimeter setting not received, use Marshall County altimeter setting and increase all DA 62 feet and all MDA 80 feet; increase LNAV Cats C/D visibility to 1 ½ miles, Circling Cat C visibility to 2 miles and Circling Cat D visibility to 3 miles. Inoperative table does not apply to LPV, LNAV/VNAV and LNAV. For inoperative ODALS when using Marshall County altimeter setting, inoperative table does not apply to LNAV Cats A/B; increase LNAV Cat D visibility to 1¾. VDP and Baro-VNAV NA with Marshall County altimeter setting.

ODALS 	MISSED APPROACH: Climb to 2500 direct JITSA and hold.
-----------	---

AWOS-3 120.025	CHICAGO CENTER 123.75 259.1	UNICOM 123.0 (CTAF) 0
--------------------------	---------------------------------------	---------------------------------



2500	JITSA	4 NM Holding Pattern					
							
*LNAV only.		COYAR 2 NM to RW36	JODY5 2300	MRKWL	183° → 2500 ← 003°		
		*1.1 NM to RW36		*1300	2300		
		1.1		0.9	3.1 NM	6.1 NM	GP 3.00° TCH 40
CATEGORY	A	B	C	D			
LPV DA	900-1		250 (300-1)				
LNAV/ VNAV DA	900-1		250 (300-1)				
LNAV MDA	1020-1		370 (400-1)				
CIRCLING	1120-1 466 (500-1)	1240-1 586 (600-1)	1260-1¾ 606 (700-1¾)	1460-2½ 806 (900-2½)			