

WAAS CH 93838 W27A	APP CRS 270°	Rwy Idg TDZE 1240 Apt Elev 1243	4043
--	------------------------	---	-------------

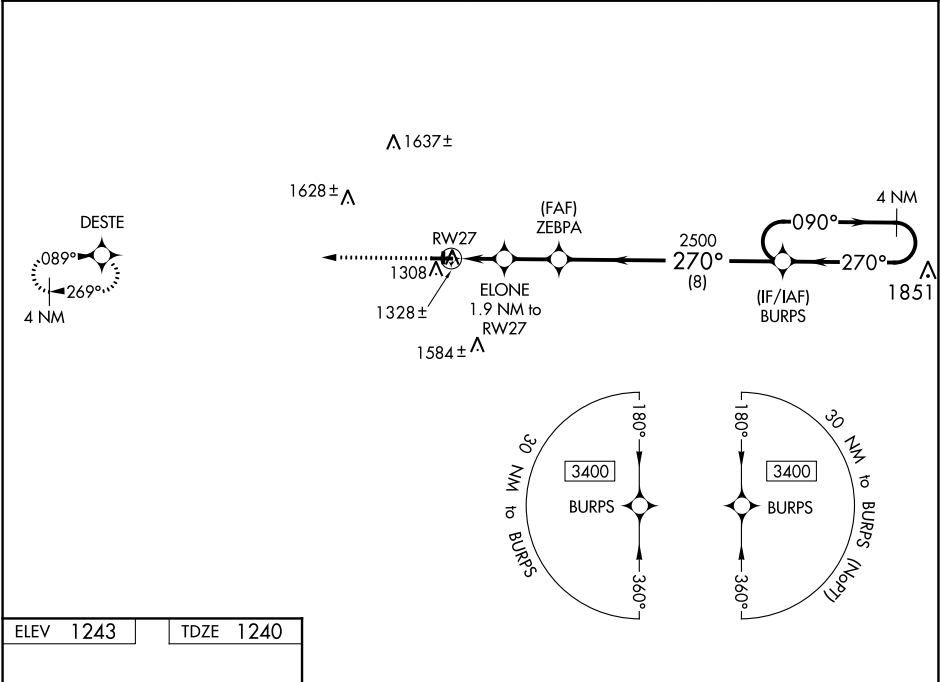
RNAV (GPS) RWY 27

CUMBERLAND MUNI (UBE)

⚠ For uncompensated Baro-VNAV systems, LNAV/VNAV NA below -17°C (2°F) or above 54°C (130°F). Baro-VNAV and VDP NA when using Rice Lake altimeter setting. DME/DME RNP-0.3 NA. Helicopter visibility reduction below ¾ SM NA. When local altimeter setting not received, use Rice Lake altimeter setting; increase LPV DA to 1533 feet and LNAV/VNAV DA to 1549 feet and all MDA 60 feet; increase LPV all Cats visibility and LNAV Cat C/D visibility ½ mile; increase Circling Cat D visibility ¼ mile.

MISSED APPROACH:
Climb to 3400 direct DESTE and hold.

AWOS-3PT 119.175	MINNEAPOLIS CENTER 125.3 335.6	GCO 121.725	UNICOM 122.8 (CTAF) 0
----------------------------	--	-----------------------	---------------------------------



ELEV 1243	TDZE 1240
-----------	-----------

REIL Rwy 27 0

MIRL Rwy 9-27 0

3400 DESTE		VGSI and RNAV glidepath not coincident (VGSI Angle 3.00/TCH 29).			
*LNAV only		4 NM Holding Pattern			
RW27		ELONE 1.9 NM to RW27	ZEBPA 2500	BURPS	090° → 3400
*1 NM to RW27		*1860	2500	GP 3.00° TCH 40	
1 NM		0.9 NM	2 NM	8 NM	
CATEGORY	A	B	C	D	
LPV DA		1490-1	250 (300-1)		
LNAV/VNAV DA		1506-1	266 (300-1)		
LNAV MDA		1580-1	340 (400-1)		
CIRCLING	1640-1 397 (400-1)	1940-1 697 (700-1)	1940-2 697 (700-2)	1980-2 ¼ 737 (800-2 ¼)	