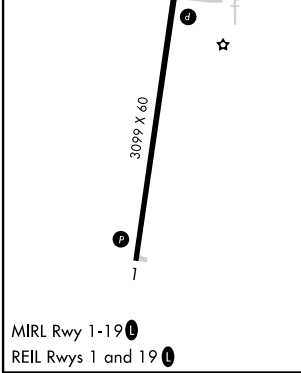
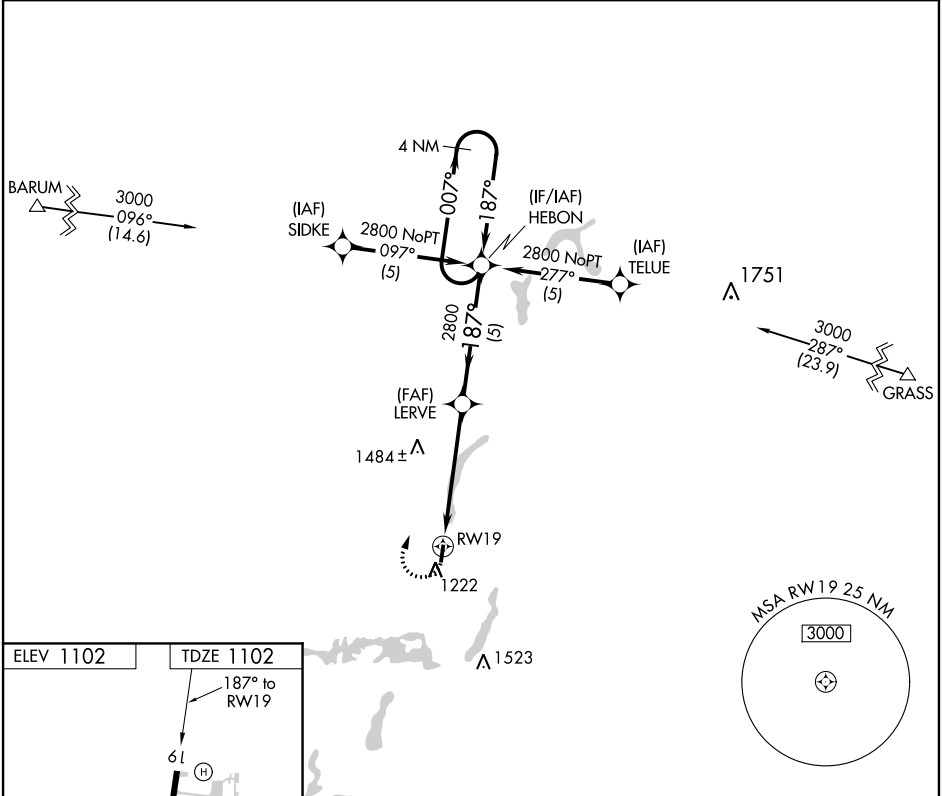


APP CRS	Rwy Idg	3099
187°	TDZE	1102
	Apt Elev	1102

RNAV (GPS) RWY 19  
SOLON SPRINGS MUNI (OLG)

RNP APCH.	MISSED APPROACH: Climbing right turn to 2800 direct HEBON WP and hold.
▼ Straight-in Rwy 19 NA at night, Circling Rwy 19 NA at night. Rwy 19 helicopter visibility reduction below 1 SM NA.	

AWOS-3 119.6	DULUTH APP CON 125.45 233.7	CTAF 122.9
-----------------	--------------------------------	---------------



2800	HEBON	Visual Segment - Obstacles.				4 NM Holding Pattern
		LERVE	HEBON			
		RWY 19	2800			
		5.1 NM	5 NM			
CATEGORY	A	B	C	D		
LNAV MDA	1800-1	698 (700-1)	1800-2 698 (700-2)	NA		
CIRCLING	1800-1	698 (700-1)	1800-2 698 (700-2)	NA		

EC-3, 03 DEC 2020 to 31 DEC 2020

EC-3, 03 DEC 2020 to 31 DEC 2020