

|         |          |      |
|---------|----------|------|
| APP CRS | Rwy Idg  | 5000 |
| 138°    | TDZE     | 988  |
|         | Apt Elev | 989  |

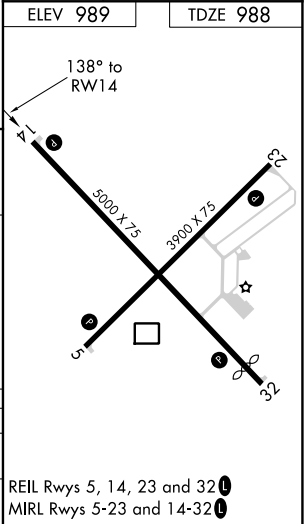
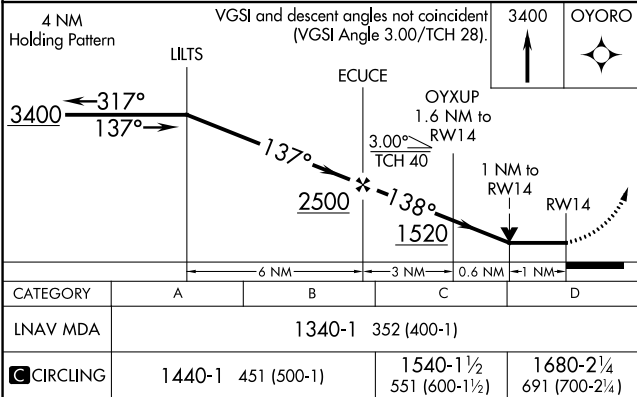
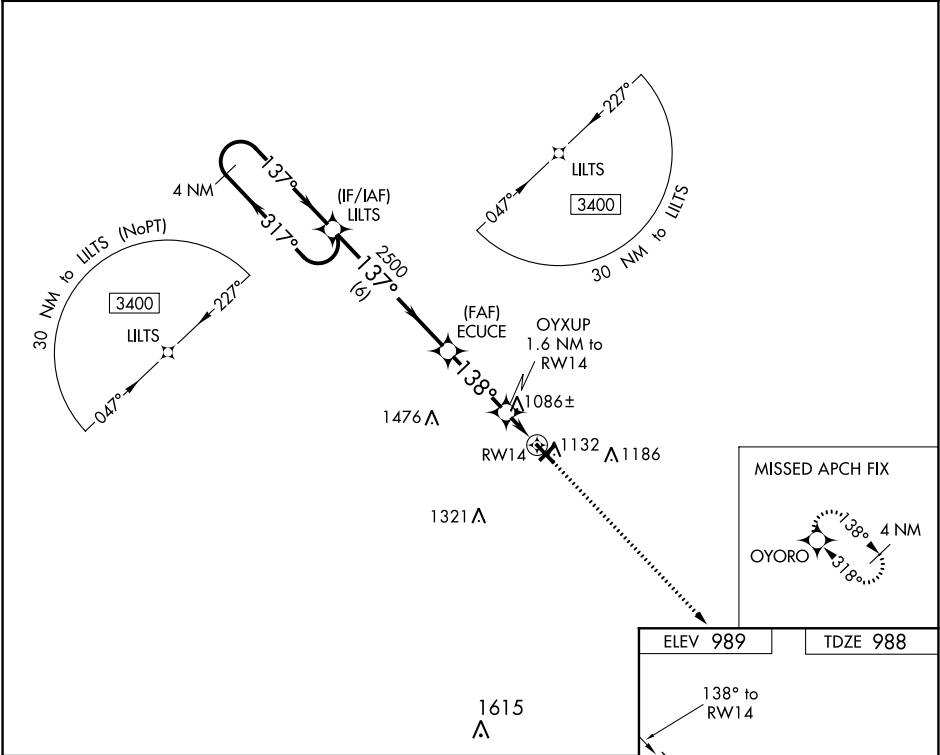
RNAV (GPS) RWY 14  
BURNETT COUNTY (RZN)

**⚠** DME/DME RNP-0.3 NA. VDP NA with Rush City, MN altimeter setting.

**⚠** When local altimeter setting not received, use Rush City, MN altimeter setting and increase all MDA 80 feet; increase LNAV Cat C/D visibility and Circling Cat C/D visibility ¼ mile. Helicopter visibility reduction below ¾ SM NA. Night landing: Rwy 5, 23, 32 NA.

**MISSED APPROACH:**  
Climb to 3400 direct  
OYORO and hold.

|                   |                                    |                                 |
|-------------------|------------------------------------|---------------------------------|
| AWOS-3<br>118,325 | MINNEAPOLIS CENTER<br>121.05 397.9 | UNICOM<br>122.8 (CTAF) <b>0</b> |
|-------------------|------------------------------------|---------------------------------|



EC-3, 03 DEC 2020 to 31 DEC 2020

EC-3, 03 DEC 2020 to 31 DEC 2020