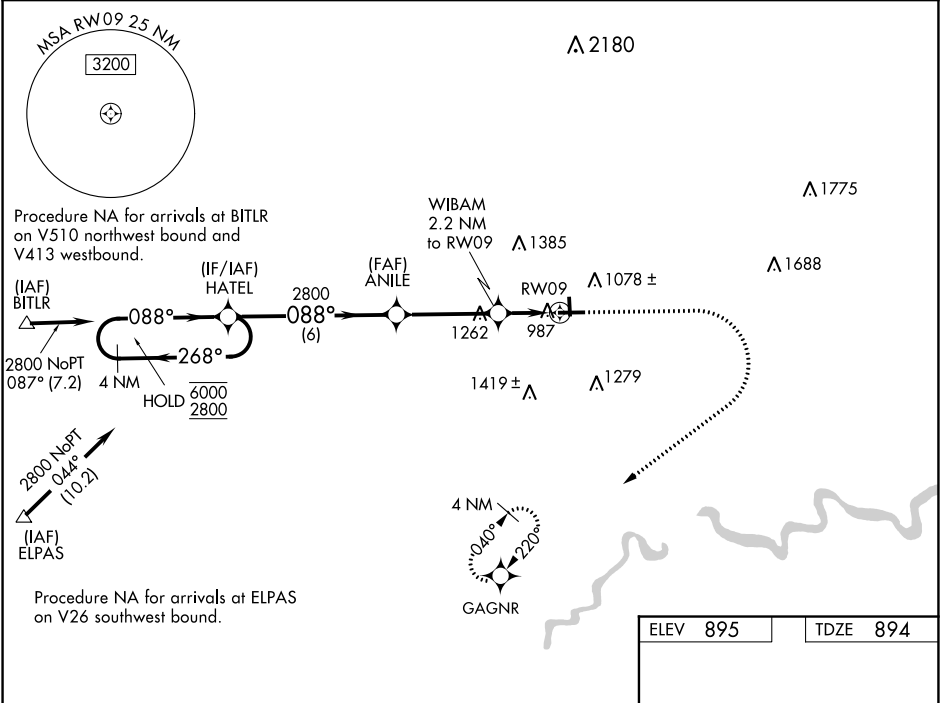


WAAS CH <b>40304</b> <b>W09A</b>	APP CRS <b>088°</b>	Rwy Idg TDZE Apt Elev	<b>5074</b> <b>894</b> <b>895</b>
--	------------------------	-----------------------------	---

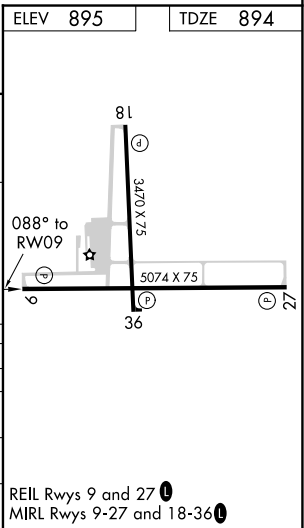
RNAV (GPS) RWY 9

MENOMONIE MUNI-Score Field (LUM)

RNP APCH.		MISSED APPROACH: Climb to 1400 then climbing right turn to 2800 direct GAGNR and hold.
<div><div><div></div><div></div></div><div>Circling Rwy 18, 36 NA at night. For uncompensated Baro-VNAV systems, LNAV/VNAV NA below -16°C or above 54°C.</div></div>		
AWOS-3 118.025	MINNEAPOLIS CENTER 125.3 335.6	UNICOM 122.7 (CTAF) 0



4 NM Holding Pattern		1400	2800	GAGNR
<div><div>HATEL</div><div>ANILE</div><div>WIBAM 2.2 NM to RW09</div><div>*1.3 NM to RW09</div><div>RW09</div></div>		*LNAV only		
6000 ← 268° → 088° → 2800		*1640		
GP 3.00° TCH 48		6 NM 3.6 NM 0.9 1.3		
CATEGORY	A	B	C	D
LPV DA		1144-3/4	250 (300-1)	NA
LNAV/VNAV DA		1423-1 1/2	529 (600-1 1/2)	NA
LNAV MDA	1360-1	466 (500-1)	1360-1 3/8 466 (500-1 3/8)	NA
CIRCLING	1420-1 525 (600-1)	1800-1 1/4 905 (1000-1 1/4)	1820-2 3/4 925 (1000-1 3/4)	NA



EC-3, 03 DEC 2020 to 31 DEC 2020

EC-3, 03 DEC 2020 to 31 DEC 2020