

VORTAC EAU	APP CRS	Rwy Idg	5074
113.65	265°	TDZE	894
Chan 83 (Y)		Apt Elev	895

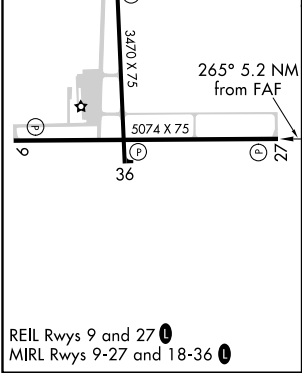
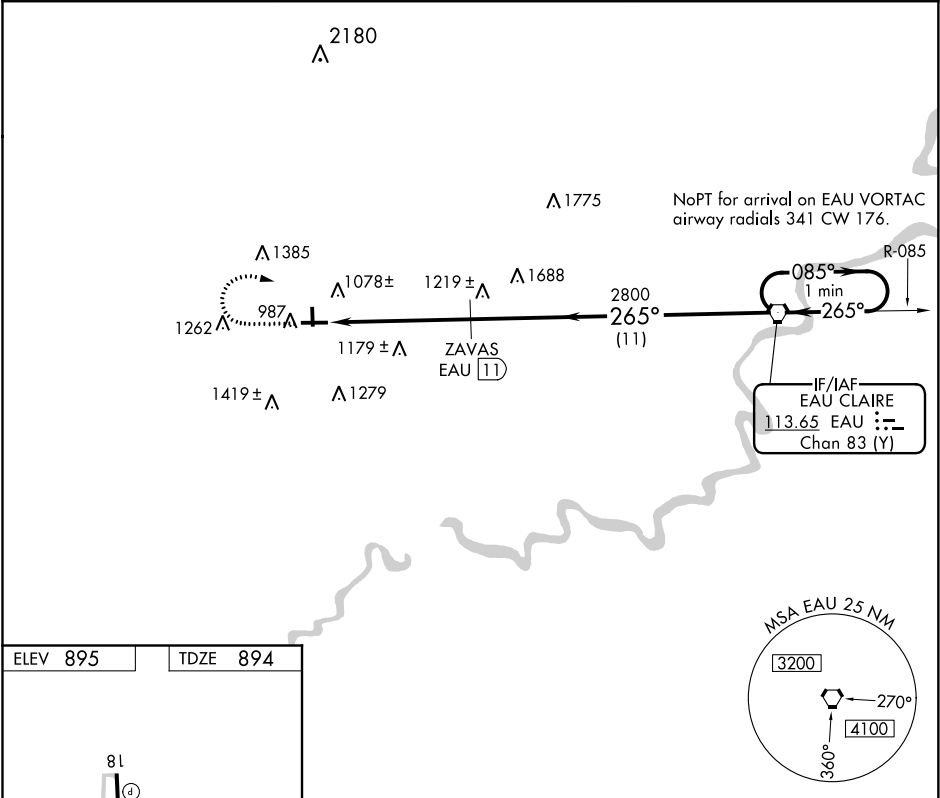
VOR/DME RWY 27

MENOMONIE MUNI-SCORE FIELD (LUM)

When local altimeter setting not received, use Chippewa Valley Rgnl altimeter setting and increase all MDA 60 feet, increase Circling Cat B and C visibility ¼ SM. Visibility reduction by helicopters NA. VDP NA when using Chippewa Valley Rgnl altimeter setting.

MISSED APPROACH: Climb to 2000 then climbing right turn to 2800 direct EAU VORTAC and hold.

AWOS-3 118.025	MINNEAPOLIS CENTER 125.3 335.6	UNICOM 122.7 (CTAF) 0
-------------------	-----------------------------------	--------------------------



2000	2800	EAU	VGSI and descent angles not coincident (VGSI Angle 3.00/TCH 45).	One Minute Holding Pattern
		ZAVAS EAU 11		
		EAU 14.2		
		EAU 16.2		
		EAU VORTAC		
		2800		
		265°		
		085°		
		2800		
		265°		
		2 NM		
		3.2 NM		
		11 NM		
CATEGORY	A	B	C	D
S-27	1560-1	666 (700-1)	1560-1¾ 666 (700-1¾)	NA
CIRCLING	1560-1 665 (700-1)	1800-1¼ 905 (1000-1¼)	1820-2¾ 925 (1000-2¾)	NA