

WAAS CH 86429 W12A	APP CRS 114°	Rwy Idg TDZE 811 Apt Elev 813
--	------------------------	---

RNAV (GPS) RWY 12

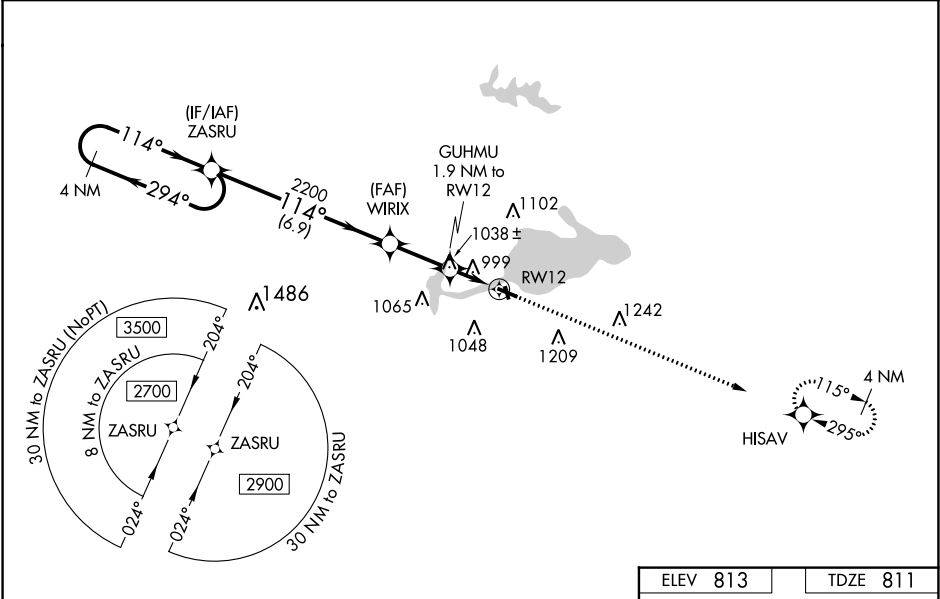
SHAWANO MUNI (E/ZS)

⚠

Baro-VNAV NA when using Green Bay altimeter setting. For uncompensated Baro-VNAV systems, LNAV/VNAV NA below -16°C (4°F) or above 39°C (102°F). DME/DME RNP-0.3 NA. Visibility reduction by helicopters NA. Straight-In/Circling Rwy 12 procedure NA at night. Circling to Rwy 35 NA at night. When local altimeter setting not received, use Green Bay altimeter setting and increase all DA 77 feet and all MDA 80 feet and increase LPV all Cats visibility 1/8 mile, LNAV/VNAV all Cats visibility 1/4 mile, and LNAV and Circling Cats C and D visibility 1/4 mile.

MISSED APPROACH:
Climb to 2500 direct
HISAV and hold.

AWOS-3 118.65	GREEN BAY APP CON ★ 119.4 338.2	UNICOM 122.8 (CTAF) 0
-------------------------	---	---------------------------------



4 NM Holding Pattern

GP 3.00°
TCH 45

2700

2200

2200

1460

6.9 NM

2.3 NM

1.9 NM

2500

HISAV

*LNAV only

114° to RWY 12

3899 X 75

2725 X 60

35

30

CATEGORY	A	B	C	D
LPV DA	1082-1 271 (300-1)			
LNAV/VNAV DA	1378-2 567 (600-2)			
LNAV MDA	1300-1	489 (500-1)	1300-1 3/8	489 (500-1 3/8)
CIRCLING	1340-1 527 (600-1)	1440-1 627 (700-1)	1440-1 3/4 627 (700-1 3/4)	1560-2 1/2 747 (800-2 1/2)

ELEV 813

TDZE 811

WATER ALL-WAY:
12000 X 1000

MIRL Rwy 12-30 and 17-35 0

EC-3, 03 DEC 2020 to 31 DEC 2020

EC-3, 03 DEC 2020 to 31 DEC 2020