

WAAS CH 50308 W24A	APP CRS 241°	Rwy Idg TDZE 666 Apt Elev 666
----------------------------------------	------------------------	---------------------------------------------------

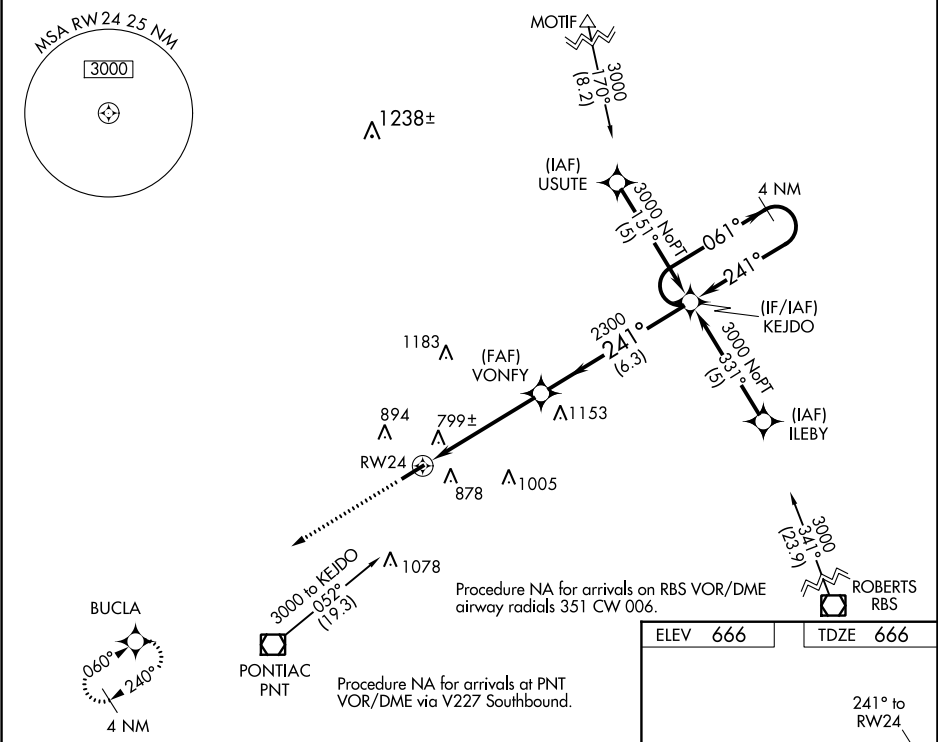
RNAV (GPS) RWY 24






PONTIAC MUNI (PNT)

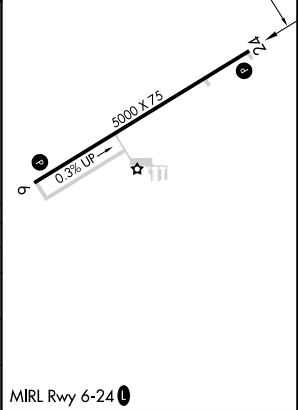
⚠ DME/DME RNP-0.3 NA. For uncompensated Baro-VNAV systems, LNAV/VNAV NA below -16°C (4°F) or above 54°C (130°F). When local altimeter setting not received, use Bloomington/Normal altimeter setting and increase all DA 98 feet and all MDA 100 feet, and increase LPV all Cats, LNAV/VNAV all Cats, LNAV and Circling Cat C visibility ¼ mile. Baro-VNAV and VDP NA when using Bloomington/Normal altimeter setting.

MISSED APPROACH:
Climb to 3000 direct
BUCLA and hold.

AWOS-3 119.675	CHICAGO CENTER 123.75 259.1	UNICOM 123.075 (CTAF) 0
--------------------------	---------------------------------------	-----------------------------------



3000	BUCLA				KEJDO	4 NM Holding Pattern
						
*LNAV only.		*1.6 NM to RW24		VONFY	061° →	3000
					← 241°	
				2300		GP 3.00° TCH 35
		1.6 NM		3.3 NM	6.3 NM	
CATEGORY		A	B	C		D
LPV DA		916-1 250 (300-1)				NA
LNAV/ VNAV DA		1139-1¾ 473 (500-1¾)				NA
LNAV MDA		1220-1	554 (600-1)	1220-1½ 554 (600-1½)		NA
CIRCLING		1220-1	554 (600-1)	1220-1½ 554 (600-1½)		NA



EC-3, 03 DEC 2020 to 31 DEC 2020

EC-3, 03 DEC 2020 to 31 DEC 2020