

WAAS
CH **42737**
W27A

APP CRS
271°

Rwy Idg
TDZE
Apt Elev
5001
733
738

RNAV (GPS) RWY 27

RANTOUL NATL AVN CNTR-FRANK ELLIOTT FIELD (TIP)

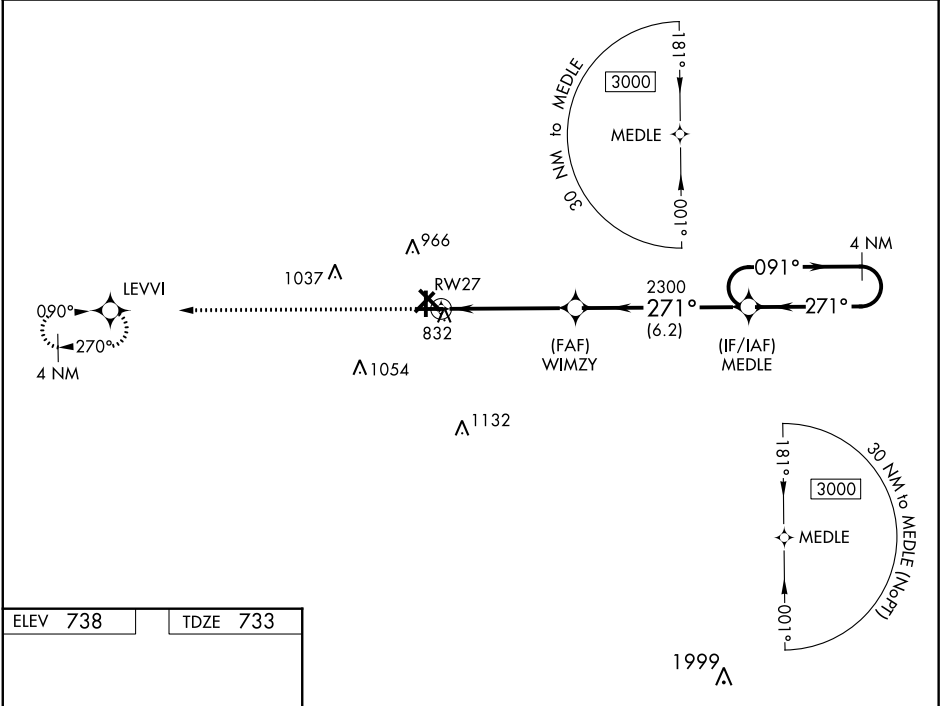
▼

▲

For uncompensated Baro-VNAV systems, LNAV/VNAV NA below -16°C (4°F) or above 54°C (130°F). DME/DME RNP-0.3 NA. When local altimeter setting not received, use Champaign Urbana altimeter setting and increase all DA 41 feet and all MDA 60 feet; increase LNAV/VNAV all Cats visibility ¼ mile and LNAV and Circling Cats C/D visibility ¼ mile. Baro-VNAV and VDP NA when using Champaign Urbana altimeter setting. Helicopter visibility reduction below ¾ SM NA.

MISSED APPROACH:
Climb to 3000 direct LEVVI and hold.

AWOS-3 119.025	CHAMPAIGN APP CON ★ 121.35 285.65	UNICOM 123.0 (CTAF) 0
--------------------------	---	--



ELEV **738** TDZE **733**

REIL Rwy 9 and 27 **0**
MIRL Rwy 9-27 and 18-36 **0**

3000	LEVVI				
*LNAV only		WIMZY	MEDLE	4 NM Holding Pattern	
		RW27		GP 3.00° TCH 40	
		1.5 NM	3.3 NM	6.2 NM	
CATEGORY	A	B	C	D	
LPV DA	983-1		250 (300-1)		
LNAV/VNAV DA	1029-1		296 (300-1)		
LNAV MDA	1240-1 507 (600-1)		1240-1¾ 507 (600-1¾)		
CIRCLING	1240-1 502 (600-1)	1280-1 542 (600-1)	1380-1¾ 642 (700-1¾)	1420-2¼ 682 (700-2¼)	

EC-3, 03 DEC 2020 to 31 DEC 2020

EC-3, 03 DEC 2020 to 31 DEC 2020