



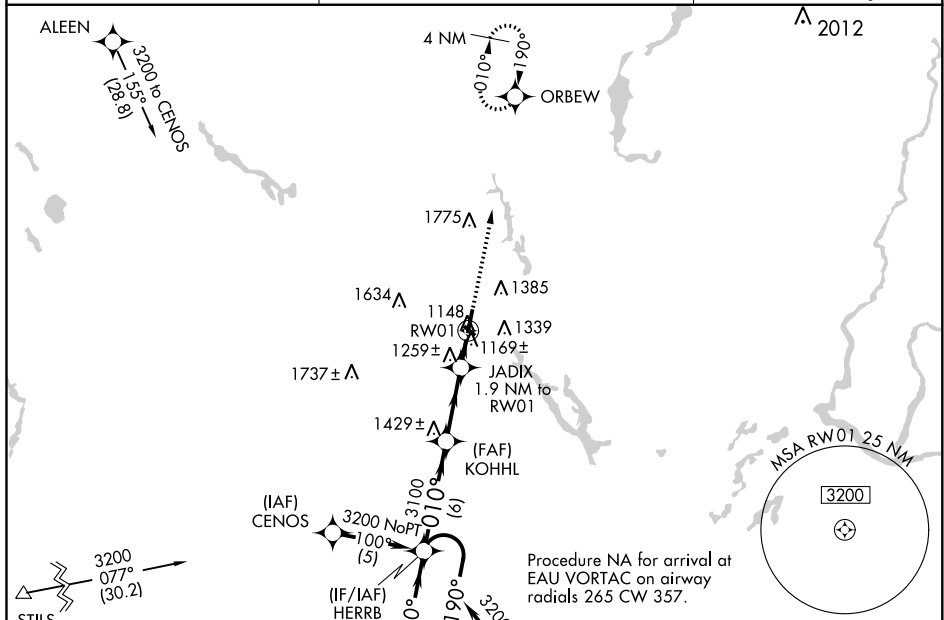
WAAS CH <b>86217</b> <b>W01A</b>	APP CRS <b>010°</b>	Rwy Idg <b>6500</b> TDZE <b>1101</b> Apt Elev <b>1109</b>
--	------------------------	---

## RNAV (GPS) RWY 1

RICE LAKE RGNL-CARL'S FIELD (RPD)

<p> -35°C</p>	<p>If local altimeter setting not received, use Chippewa Valley Rgnl altimeter setting and increase all DAs/MDAs 120 feet. DME/DME RNP-0.3 NA. Baro-VNAV NA below -17°C (3°F). Baro VNAV and VDP NA when using Chippewa Valley Rgnl altimeter setting. For nonoperative MALSR, increase LPV visibility to 1, and LNAV Cat D visibility to 1¼. Circling Rwy 13, 31 NA at night.</p>	<p> MALSR</p>	<p><b>MISSED APPROACH:</b> Climb to 3200 direct ORBEW and hold.</p>
--	--	--	---

AWOS-3 <b>120.525</b>	MINNEAPOLIS CENTER <b>125.3 335.6</b>	UNICOM <b>122.7(CTAF)0</b>
--------------------------	--	-------------------------------



4 NM Holding Pattern

VGSJ and RNAV glidepath not coincident (VGSJ Angle 3.00/TCH 28).

GP 3.00° TCH 45

CATEGORY	A	B	C	D
LPV DA		1390-1/2	289 (300-1/2)	
RNAV/VNAV DA		1440-3/4	339 (400-3/4)	
RNAV MDA	1520-1/2	419 (500-1/2)	1520-3/4 419 (500-3/4)	1520-1 419 (500-1)
<b>C</b> CIRCLING	1600-1 1/4 493 (500-1 1/4)	1740-1 1/4 631 (700-1 1/4)	1740-1 3/4 631 (700-1 3/4)	1940-2 3/4 831 (900-2 3/4)

Diagram details: 4 NM Holding Pattern, 190° inbound, 010° outbound, 3200, 3100, 1760, 6 NM, 4.2 NM, 0.6, 1.3, 3200 ORBEW, 1.9 NM to RW01, 1.3 NM to RW01, \* LNAV only, 010° to RW01, 6700 x 100, 3500 x 75, 1151, 61, 13, 5, 01, 32, 4 NM, (24.4), (IAF) EAU CLAIRE EAU, ELEV 1109, TDZE 1101, REIL Rwy 13, 31, REIL Rwy 19, HIRL Rwy 1-19, MIRL Rwy 13-31.