

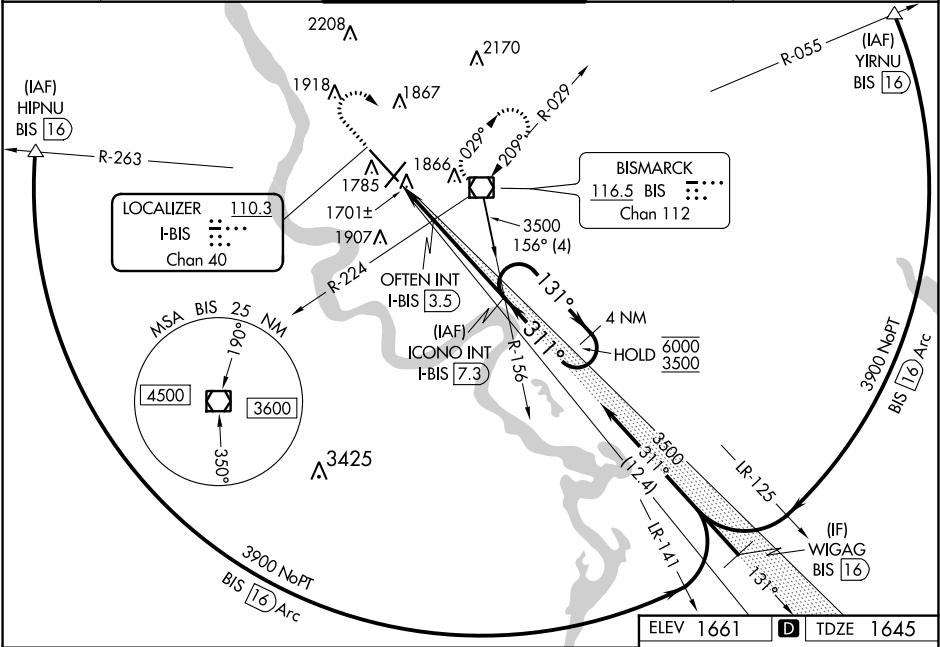
LOC/DME I-BIS	APP CRS	Rwy ldg	8794
110.3	311°	TDZE	1645
Chan 40		Apt Elev	1661

ILS or LOC RWY 31

BISMARCK MUNI (BIS)

DME required for procedure entry.		MALSR	MISSED APPROACH: Climb to 2800 then climbing right turn to 3600 direct BIS VOR/DME and hold.
Autopilot coupled approach NA below 2680. For inop ALS, increase S-LOC 31 OFTEN FIX Cat C/D minimums visibility to RVR 5500.		ASR -35°C	

ATIS 119.35	BISMARCK APP CON★ 126.3 298.9	BISMARCK TOWER★ 118.3 (CTAF) 0 257.8	GND CON 121.9	UNICOM 122.95
-----------------------	---	--	-------------------------	-------------------------



2800

↑

3600

↗

BIS

Use I-BIS DME when on the localizer course.

ICONO INT

I-BIS 7.3

4 NM

Holding Pattern

OFTEN INT

I-BIS 3.5

3500

↗

131°

↖

311°

6000

3500

GS 3.00°

TCH 48

*LOC only.

I-BIS 1.6

*I-BIS 2.6

2300*

1 NM

0.9 NM

3.8 NM

CATEGORY	A	B	C	D
S-ILS 31	1845/24		200 (200-½)	
S-LOC 31	2300/24	655 (700-½)	2300-1⅓	655 (700-1⅓)
CIRCLING	2300-1	639 (700-1)	2460-2¼ 799 (800-2¼)	2460-2½ 799 (800-2½)
OFTEN FIX MINIMUMS (DUAL VOR RECEIVERS OR DME REQUIRED)				
S-LOC 31	2020/24	375 (400-½)	2020/35	375 (400-⅝)
CIRCLING	2240-1	579 (600-1)	2460-2¼ 799 (800-2¼)	2460-2½ 799 (800-2½)

