

VORTAC DIK 112.9 Chn 76	APP CRS 183°	Rwy Idg TDZE Apt Elev	N/A N/A 2592
---	------------------------	-----------------------------	---

VOR-A
DICKINSON-THEODORE ROOSEVELT RGNL (DIK)

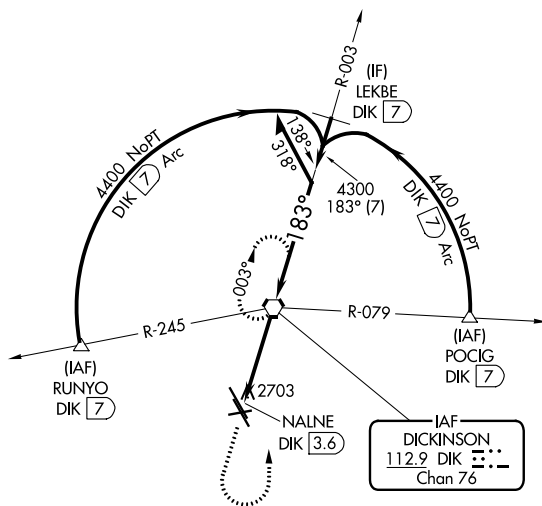
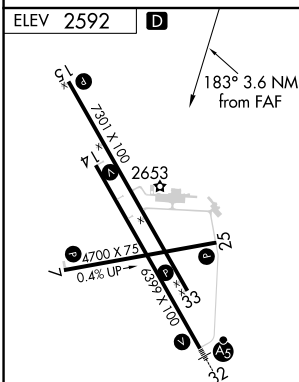
T When local altimeter setting not received, use Bowman
A altimeter setting and increase all MDAs 280 feet, increase
☑ -30°C Circling Cat C visibility $\frac{3}{4}$ SM, Cat D visibility 1 SM.

MISSED APPROACH: Climb to 4600 then turn left direct DIK VORTAC and hold.

ASOS
118.375

MINNEAPOLIS CENTER
124.25 236.825

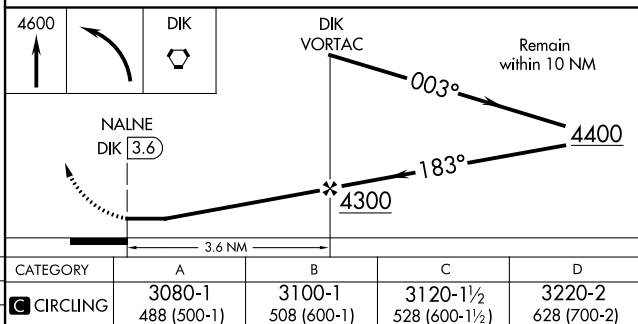
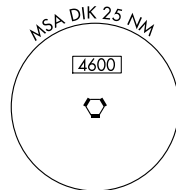
UNICOM
123.0 (CTAF) **L**

3564 Δ 

REIL Rwys 7, 14, 15, 25, and 33 **L**
MIRL Rwys 7-25, 14-32, and 15-33 **L**

FAF to MAP 3.6 NM					
Knots	60	90	120	150	180
Min:Sec	3:36	2:24	1:48	1:26	1:12

DICKINSON, NORTH DAKOTA
Amdt 6A 23APR20



DICKINSON-THEODORE ROOSEVELT RGNL (DIK)
2°48'W VOR-A

46°48'N-102°48'W

NC-1, 03 DEC 2020 to 31 DEC 2020

NC-1, 03 DEC 2020 to 31 DEC 2020