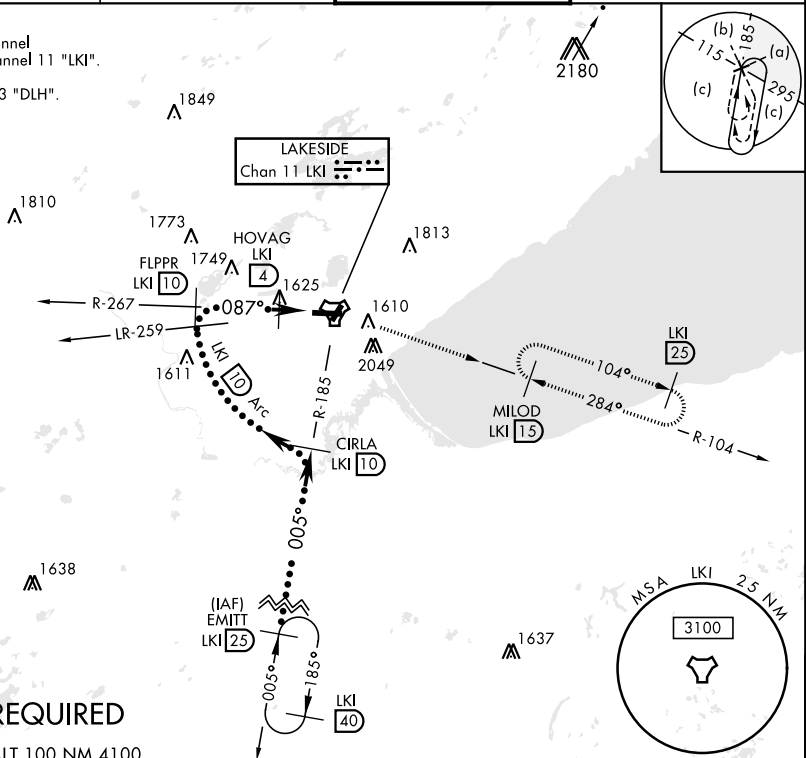


TACAN LKI Chan 11	APCH CRS 087°	Rwy Ldg 10,062 THRE 1428 Arpt Elev 1428	JAL-125 [USAF]	DULUTH INTL (KDLH)
-----------------------------	-------------------------	--	----------------	--------------------

<p>▼ * When ALS inop, increase CAT E vis to 1½ miles. ** Circling NA for CAT E SE of Rwy 3 and 27.</p>	<p>ALSF-2</p>	<p>MISSED APPROACH: Climb to 2500 then climbing right turn to 4000 via LKI TACAN R-104 to MILOD (15 DME) and hold.</p>
--	---------------	--

ATIS 124.1 270.1	DULUTH APP CON 125.45 233.7	DULUTH TOWER 118.3 257.8	GND CON 121.9 348.6
----------------------------	---------------------------------------	------------------------------------	-------------------------------

CAUTION:
Do not select channel
73 "DLH" for channel 11 "LKI".
Towers 2049" on
R-099 channel 73 "DLH".



RADAR REQUIRED

EMERG SAFE ALT 100 NM 4100

<p>EMITT R-185 (25) 005° 4000 3.00° TCH 50</p> <p>CIRCLE R-185 (10) 087° 4000 Arc 10</p> <p>FLPPR R-267 (10) 2300</p> <p>HOVAG (4) 2.7 IWWYES (2) TACAN</p> <p>2.0 NM</p>			<p>2500</p> <p>4000</p> <p>MILOD LKI (15)</p>	<p>ELEV 1428</p> <p>Rwy 9 Ldg 10,062'</p> <p>Rwy 27 Ldg 10,062'</p>	<p>THRE 1428</p>
CATEGORY	C	D	E		
S-9 *	1880/45	452	(500-1)		
CIRCLING **	1920-1½ 492 (500-1½)	1980-2 552 (600-2)	2060-2¼ 632 (700-2¼)		
<p>TDZL/CL Rwy 9-27</p> <p>REIL Rwy 3 and 21</p> <p>HIRL Rwy 3-21 and 9-27</p>					