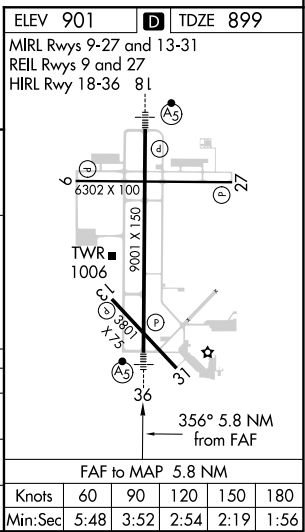
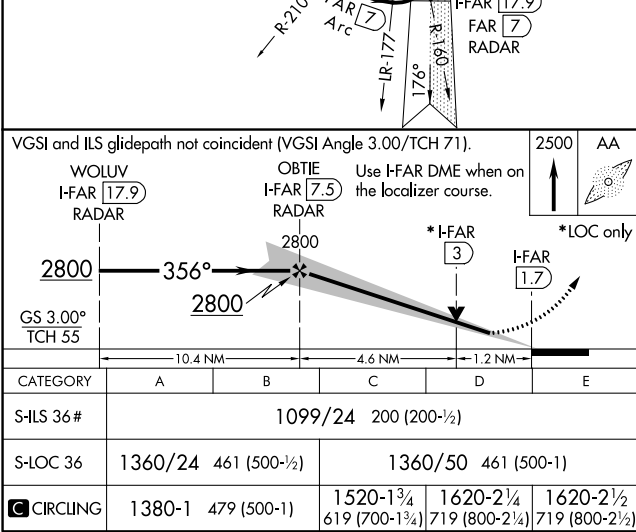
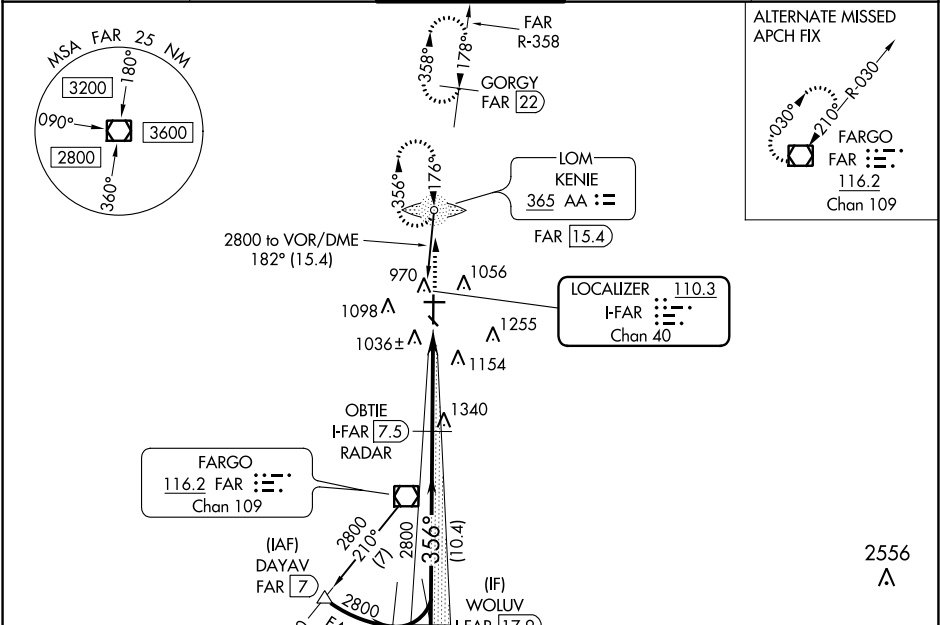


LOC/DME I-FAR <b>110.3</b> Chan <b>40</b>	APP CRS <b>356°</b>	Rwy Idg TDZE Apt Elev	<b>9001</b> <b>899</b> <b>901</b>
---	------------------------	-----------------------------	---

ILS or LOC RWY 36  
HECTOR INTL (FAR)

ADF or DME required for procedure entry. ADF or DME required.	MALSR 	MISSED APPROACH: Climb to 2500 direct KENIE LOM and hold (DME aircraft climb to 4000 on FAR VOR/DME R-358 to GORGY/22 DME and hold N, RT, 178° inbound, continue climb-in-hold to 4000).
 For inop ALS increase S-ILS 36 Cat E visibility to 1 3/8 SM. # RVR 1800 authorized with use of FD or AP or HUD to DA.		

ATIS <b>124.5 379.2</b>	FARGO APP CON <b>120.4 377.15</b>	FARGO TOWER <b>133.8 290.4</b>	GND CON <b>121.9 348.6</b>	CLNC DEL <b>121.9 348.6</b>
----------------------------	--------------------------------------	-----------------------------------	-------------------------------	--------------------------------



NC-1, 03 DEC 2020 to 31 DEC 2020

NC-1, 03 DEC 2020 to 31 DEC 2020