

WAAS CH 50106 W36A	APP CRS 356°	Rwy Idg 9001 TDZE 899 Apt Elev 901
--	------------------------	---

RNAV (GPS) RWY 36
HECTOR INTL (FAR)

RNP APCH.

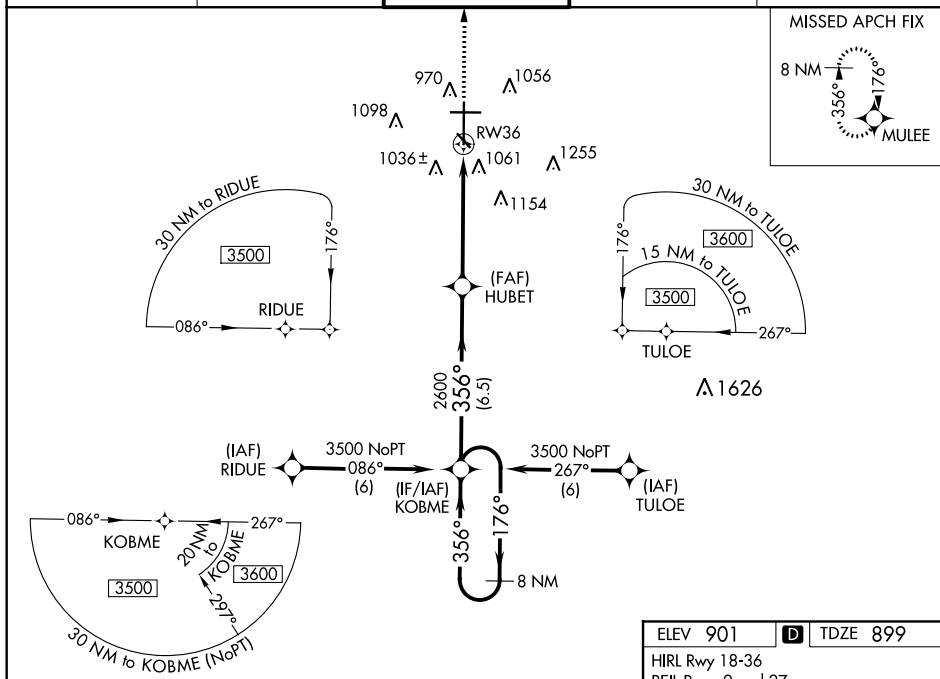
T Baro-VNAV NA below -16°C (4°F). For inop MALSR, increase LPV Cat E visibility to RVR 4000, and increase LNAV/VNAV and LNAV Cat E visibility to 1¾ mile.

MALSR



MISSED APPROACH: Climb to 3500 direct MULEE and hold.

ATIS 124.5 379.2	FARGO APP CON 120.4 377.15	FARGO TOWER 133.8 290.4	GND CON 121.9 348.6	CLNC DEL 121.9 348.6
---------------------	-------------------------------	----------------------------	------------------------	-------------------------



VGSI and RNAV glidepath not coincident
(VGSI Angle 3.00/TCH 71).

CATEGORY	A	B	C	D	E
LPV DA	1150/24 251 (300-½)				
LNAV/ VNAV DA	1360/50 461 (500-1)				1360/60 461 (500-1¼)
LNAV MDA	1420/24 521 (600-½)		1420/50 521 (600-1)	1420/60 521 (600-1¼)	
C CIRCLING	1420-1 519 (600-1)		1520-1¾ 619 (700-1¾)	1620-2¼ 719 (800-2¼)	1620-2½ 719 (800-2½)

