

LOC/DME I-HON <b><u>110.3</u></b> Chan <b>40</b>	APP CRS <b>301°</b>	Rwy Idg <b>7201</b> TDZE <b>1286</b> Apt Elev <b>1289</b>
--	------------------------	---

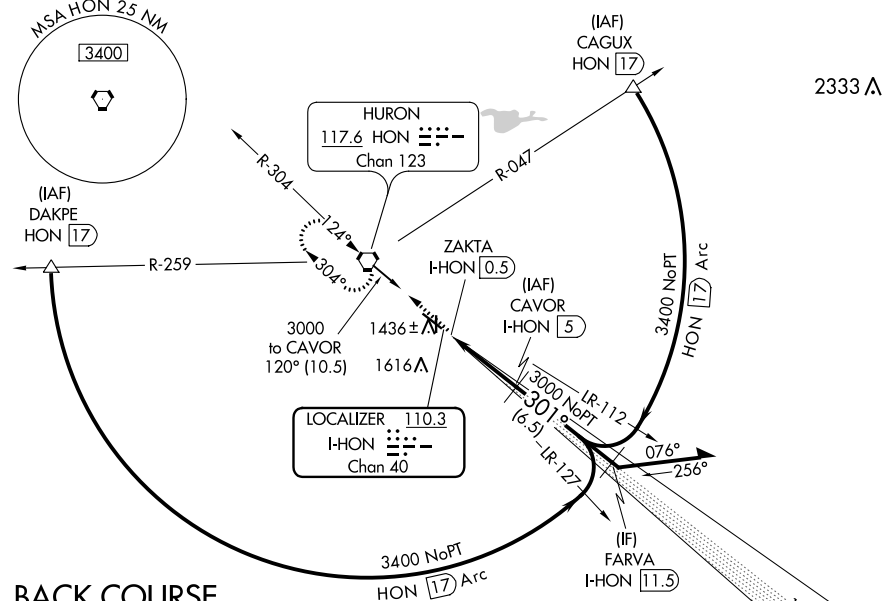
LOC/DME BC RWY 30  
HURON RGNL (HON)

DME required.

**T** If local altimeter setting not received, use Mitchell Muni altimeter setting  
**A** and increase all MDAs 100 feet. Circling Rwy 17, 35 NA at night.

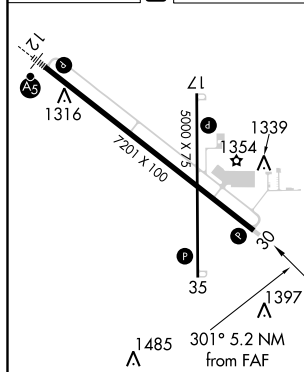
**MISSED APPROACH:** Climb to 3000 direct HON VORTAC and hold.

ASOS <b>118.125</b>	MINNEAPOLIS CENTER <b>126.25 339.8</b>	UNICOM <b>123.0 (CTAF) 0</b>
------------------------	---	---------------------------------

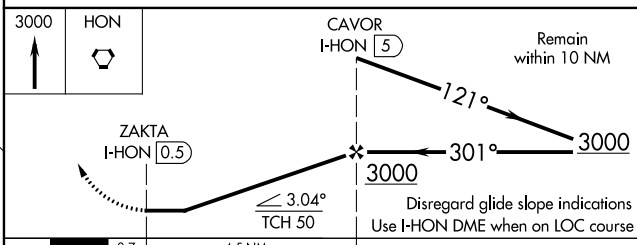


## BACK COURSE

ELEV 1289	<b>D</b>	TDZE 1286
-----------	----------	-----------



HIRL Rwy 12-30 **L**  
MIRL Rwy 17-35 **L**  
REIL Rwy 17, 30 and 35 **L**



CATEGORY	A	B	C	D
S-30	1700-1	414 (500-1)	1700-1¼ 414 (500-1¼)	
CIRCLING	1820-1	531 (600-1)	1820-1½ 531 (600-1½)	1980-2¼ 691 (700-2¼)

HURON, SOUTH DAKOTA  
Amdt 13A 24MAY18

44°23'N-98°14'W

HURON RGNL (HON)  
LOC/DME BC RWY 30