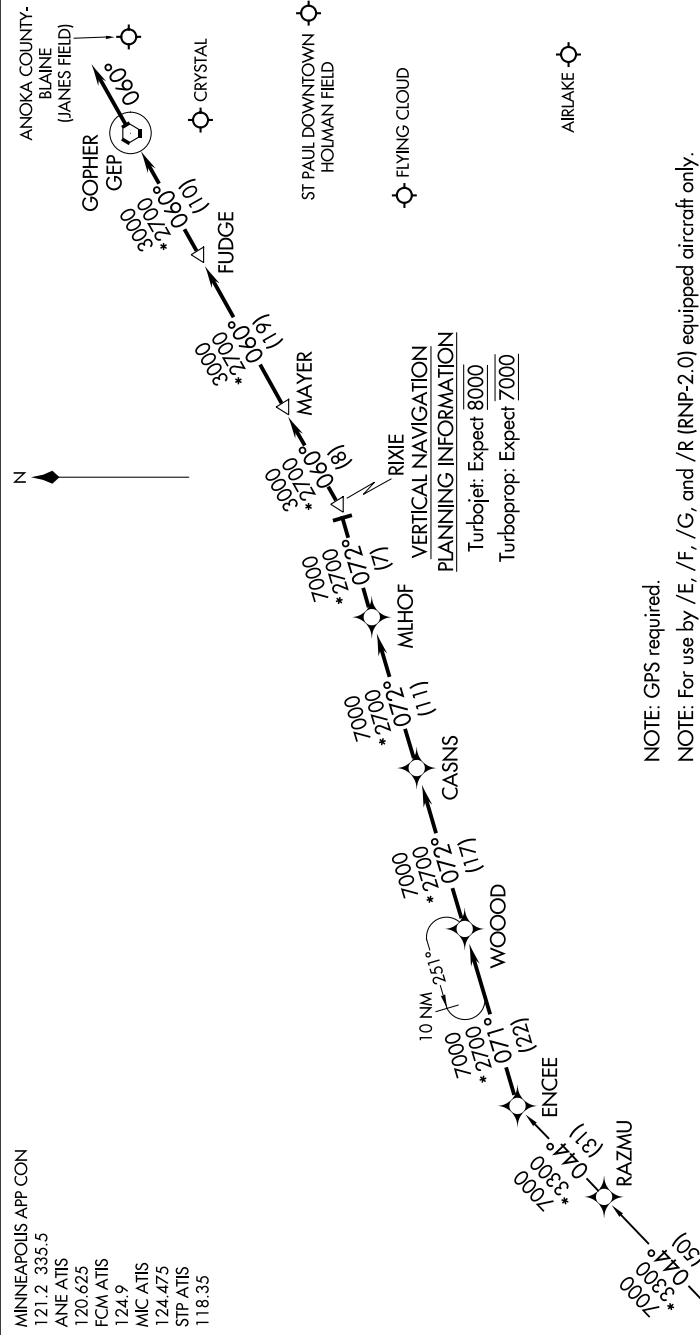


NC-1, 03 DEC 2020 to 31 DEC 2020



ARRIVAL ROUTE DESCRIPTION
<u>SIoux FALLS TRANSITION (FSD.ENCEE2)</u>
From over ENCEE as depicted to RIXIE, thence as depicted to GEP VORTAC. Thence heading 060° , expect RADAR vectors to final approach course.

NOTE: Chart not to scale.

NC-1, 03 DEC 2020 to 31 DEC 2020