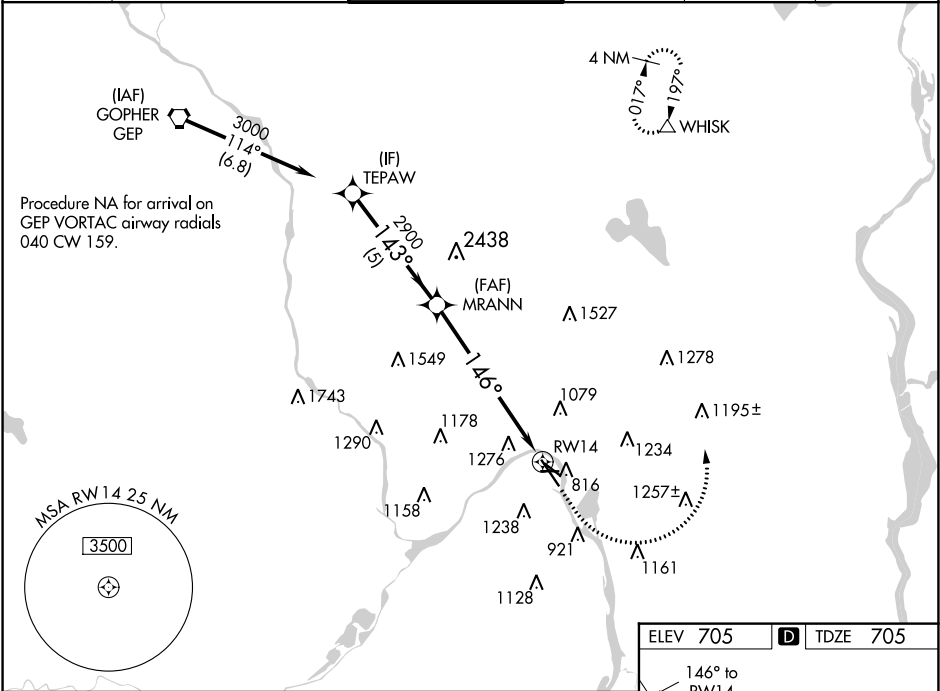


WAAS CH 62828 W14A	APP CRS 146°	Rwy Idg TDZE Apt Elev 705	6148 705 705
--	------------------------	--	---

RNAV (GPS) RWY 14

ST PAUL DOWNTOWN HOLMAN FIELD (STP)

<div><div><div></div><div></div></div><div>For uncompensated Baro-VNAV systems, LNAV/VNAV NA below -21°C (-5°F) or above 54°C (130°F). Rwy 14 helicopter visibility reduction below ¾ SM NA. DME/DME RNP-0.3 NA. For inop MALSR, increase LNAV Cats C and D to 2½ SM.</div></div>				<div><div>MALSR</div><div><div></div><div></div></div></div>	MISSED APPROACH: (Do not exceed 250K until WHISK) Climb to 1700 then climbing left turn to 3000 direct WHISK and hold.
ATIS 118.35	MINNEAPOLIS APP CON 121.2 335.65	ST. PAUL TOWER ★ 119.1(CTAF) 0 257.8	GND CON 121.675	CLNC DEL 121.675	UNICOM 122.95



TEPAW				
VGSi and RNAV glidepath not coincident (VGSi Angle 3.00/TCH 50).				
MRANN				
3000				
143°				
2900				
146°				
* 2.4 NM to RWY14				
RWY14				
*LNAV only.				
5 NM				
4.4 NM				
2.4 NM				
CATEGORY	A	B	C	D
LPV DA	955/40 250 (300-¾)			
LNAV/VNAV DA	1511-2½ 806 (900-2½)			
LNAV MDA	1520/40	815 (900-¾)	1520-1⅞	815 (900-1⅞)
CIRCLING	1580-1¼	875 (900-1¼)	1580-2½	875 (900-2½)

