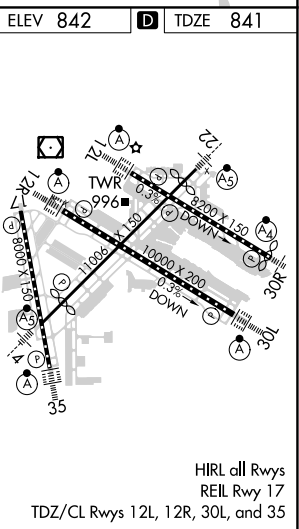


ILS RWY 12L (CAT II & III)
MINNEAPOLIS-ST PAUL INTL/WOLD-CHAMBERLAIN (MSP)

MISSED APPROACH: Climb to 1300, then climbing left turn to 3000 on MSP VOR/DME R-096 to KANAC INT/MSP 13.1 DME and hold.

CPDLC

CATEGORY II & III ILS - SPECIAL AIRCREW
& AIRCRAFT CERTIFICATION REQUIRED

MINNEAPOLIS-ST PAUL INTL/WOLD-CHAMBERLAIN (MSP)
44°53'N-93°13'W **ILS RWY 12L** (CAT II & III)