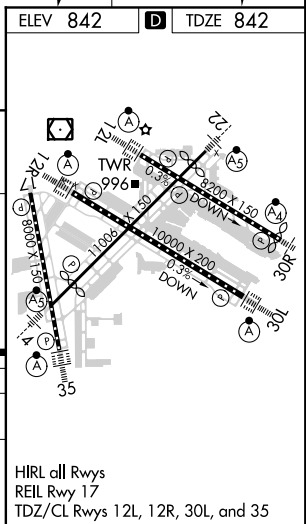
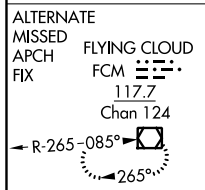


ILS RWY 12R (SA CAT I)
MINNEAPOLIS-ST PAUL INTL/WOLD-CHAMBERLAIN (MSP)

MISSED APPROACH: Climb to 1300 then climbing right turn to 3000 direct FGT VORTAC and hold.

CPDLC

HIRL all Rwy's
REIL Rwy 17
TDZ/CL Rwy's 12L, 12R, 30L, and 35