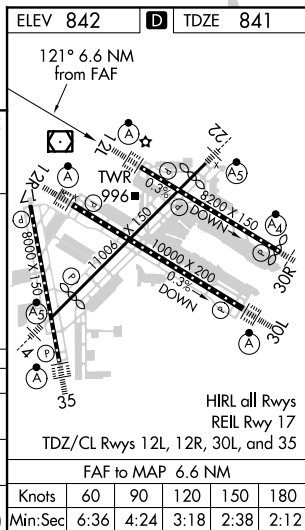
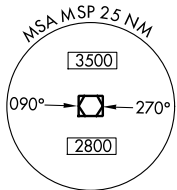



ILS or LOC RWY 12L  
MINNEAPOLIS-ST PAUL INTL/WOLD-CHAMBERLAIN (MSP)

ALSF-2

CPDLC

CATEGORY	A	B	C	D	E
S-ILS 12L	1041/18 200 (200-½)				
S-LOC 12L	1220/24 379 (400-½)		1220/35 379 (400-⅝)		
 CIRCLING	1360-1 518 (600-1)		1460-1¾ 618 (700-1¾)	1660-2¾ 818 (900-2¾)	1800-3 958 (1000-3)