

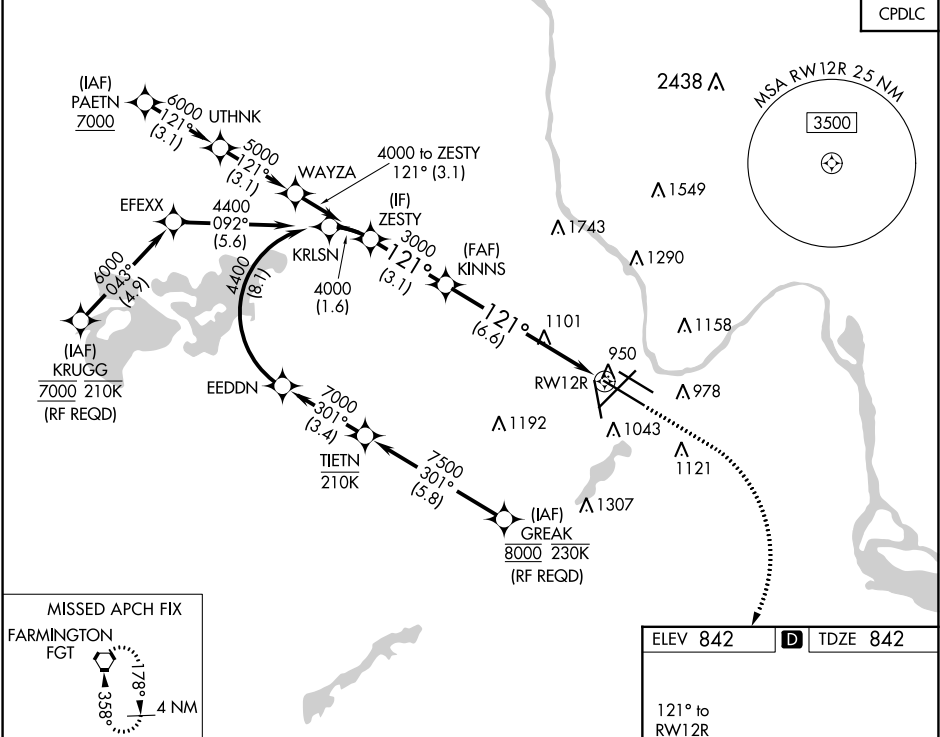
APP CRS	Rwy Idg	10000
121°	TDZE	842
	Apt Elev	842




RNAV (RNP) Y RWY 12R

MINNEAPOLIS-ST PAUL INTL/WOLD-CHAMBERLAIN (MSP)

▼ For uncompensated Baro-VNAV systems, procedure NA below -20°C (-4°F) or above 54°C (130°F). Simultaneous approach authorized with Rwy 12L. GPS required. For inop ALS, increase RNP 0.15 all Cat visibility to RVR 6000.	ALS-F-2	MISSED APPROACH: Climb to 1300 then climbing right turn to 3000 direct FGT VORTAC and hold.
---	---------	---

D-ATIS	MINNEAPOLIS APP CON	MINNEAPOLIS TOWER	GND CON	CLNC DEL
ARR 135.35 239.275	118.725 335.65 (Rwy 35)	123.675 273.55 (17-35)	N 121.8 348.6	133.2
DEP 120.8	119.3 335.65 (12L-30R, 4-22, 17)	123.95 273.55 (12L-30R)	S 121.9 348.6	
	126.95 335.65 (12R-30L)	126.7 273.55 (12R-30L, 4-22)	W 127.925 348.6	



ZESTY		VGSI and RNAV glidepath not coincident (VGSI Angle 3.00°/TCH 66°).		1300 ↑		3000 		FGT 	
4000		KINNS		3000		RW12R			
GP 3.00° TCH 50		121°		3000					
3.1 NM		6.6 NM							
CATEGORY	A	B	C	D					
RNP 0.15 DA	1191/40 349 (400-¾)								
RNP 0.30 DA	1251/45 409 (500-¾)								
AUTHORIZATION REQUIRED									

