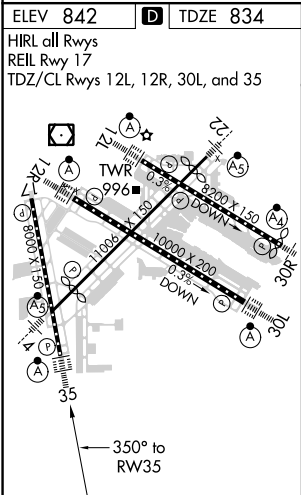
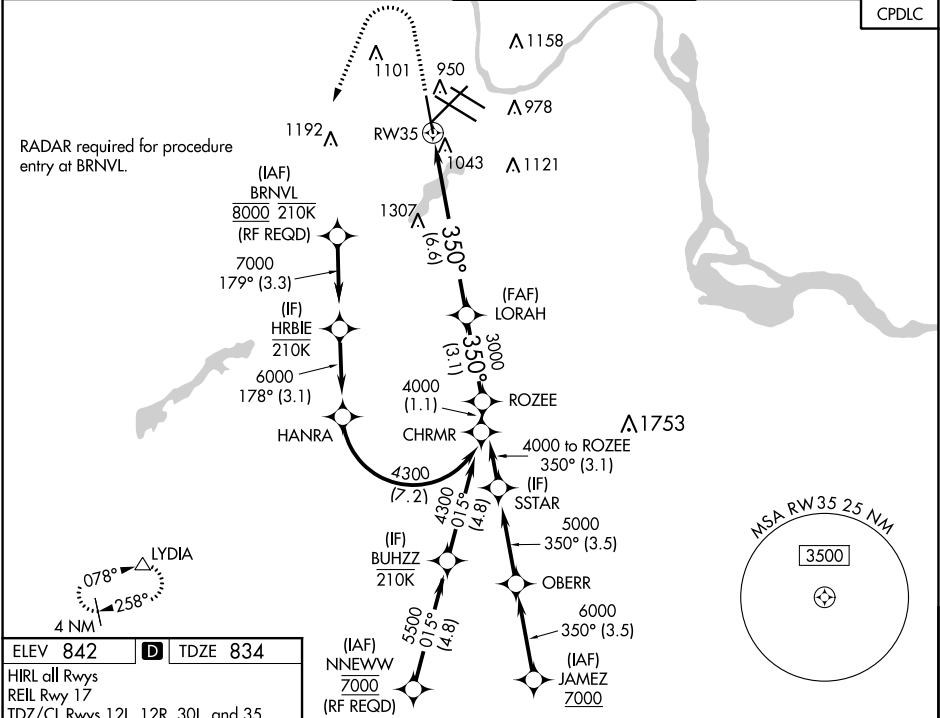


APP CRS	Rwy Idg	8000
350°	TDZE	834
	Apt Elev	842

RNAV (RNP) Y RWY 35
MINNEAPOLIS-ST PAUL INTL/WOLD-CHAMBERLAIN (MSP)

<p>▼ For uncompensated Baro-VNAV systems, procedure NA below -19°C (-2°F) or above 54°C (130°F). For inop ALSF, increase RNP 0.30 all Cats visibility to 1½ miles. GPS required.</p>		<p>ALSF-2</p>	<p>MISSED APPROACH: Climb to 1300 then climbing left turn to 3000 direct LYDIA and hold.</p>	
<p>D-ATIS ARR 135.35 239.275 DEP 120.8</p>	<p>MINNEAPOLIS APP CON 118.725 335.65 (Rwy 35) 119.3 335.65 (12L-30R, 4-22, 17) 126.95 335.65 (12R-30L)</p>	<p>MINNEAPOLIS TOWER 123.675 273.55 (17-35) 123.95 273.55 (12L-30R) 126.7 273.55 (12R-30L, 4-22)</p>	<p>GND CON N 121.8 348.6 S 121.9 348.6 W 127.925 348.6</p>	<p>CLNC DEL 133.2</p>
<p>CPDLC</p>				



<p>1300 ↑</p>		<p>3000 ↖</p>	<p>LYDIA △</p>	<p>VGSI and RNAV glidepath not coincident. (VGSI Angle 3.00/TCH 71).</p>	
<p>See planview for multiple IF locations.</p>				<p>LORAH 3000</p>	<p>ROZEE 4000</p>
<p>RW35</p>		<p>350°</p>		<p><u>3000</u></p>	
		<p>6.6 NM</p>		<p>3.1 NM</p>	
CATEGORY	A	B	C	D	
RNP 0.11 DA	1213/40 379 (400-¾)				
RNP 0.16 DA	1291/60 457 (500-1¼)				
RNP 0.30 DA	1345-1¼ 511 (600-1¼)				
<p>AUTHORIZATION REQUIRED</p>					