

WAAS CH 50125 W12A	APP CRS 121°	Rwy Idg TDZE 842 Apt Elev 842	10000
----------------------------------------	------------------------	---------------------------------------------------	--------------

RNAV (GPS) Z RWY 12R

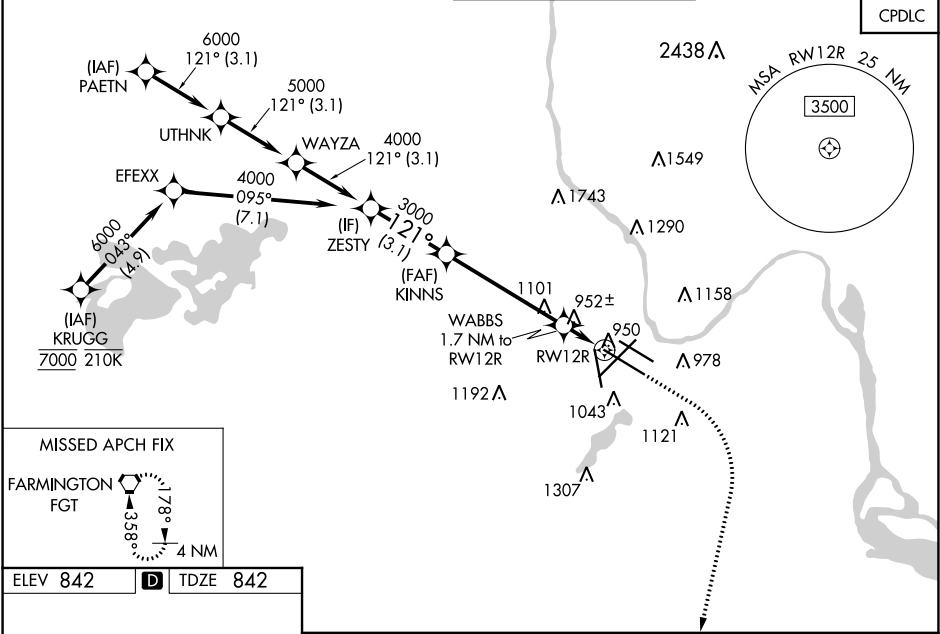
MINNEAPOLIS-ST PAUL INTL/WOLD-CHAMBERLAIN (MSP)

⚠ For uncompensated Baro-VNAV systems, LNAV/VNAV NA below -20°C (-4°F) or above 54°C (130°F). Simultaneous approach authorized with Rwy 12L. DME/DME RNP-0.3 NA. Use of FD or AP providing RNAV track guidance required during simultaneous operations. For inop ALS, increase LPV Cat E visibility to RVR 4000, increase LNAV/VNAV Cat E visibility to 1½ SM, and increase LNAV Cat C/D/E visibility to RVR 5500. LNAV procedure NA during simultaneous operations.

ALSF-2

MISSED APPROACH:
Climb to 1300 then
climbing right turn to
3000 direct FGT
VORTAC and hold.

D-ATIS	MINNEAPOLIS APP CON	MINNEAPOLIS TOWER	GND CON	CLNC DEL
ARR 135.35 239.275 DEP 120.8	118.725 335.65 (Rwy 35) 119.3 335.65 (12L-30R, 4-22, 17) 126.95 335.65 (12R-30L)	123.675 273.55 (17-35) 123.95 273.55 (12L-30R) 126.7 273.55 (12R-30L, 4-22)	N 121.8 348.6 S 121.9 348.6 W 127.925 348.6	133.2



ELEV 842 TDZE 842

HIRL all Rwys
REIL Rwy 17
TDZ/CL Rwys 12L, 12R, 30L, and 35

	ZESTY	KINNS	WABBS	1300	3000	FGT
	VGSI and RNAV glidepath not coincident (VGSI Angle 3.00/TCH 66).					
	4000	3000	1.7 NM to RWY 12R	*LNAV only		
	GP 3.00° TCH 50		*1420			
	3.1 NM		4.9 NM		0.7 NM	1 NM
CATEGORY	A	B	C	D	E	
LPV DA	1042/18 200 (200-½)					
LNAV/VNAV DA	1211/40 369 (400-¾)					
LNAV MDA	1220/24 378 (400-½)		1220/35 378 (400-⅝)			
CIRCLING	1360-1 518 (600-1)		1460-1¾ 618 (700-1¾)		1660-2¾ 818 (900-2¾) 1800-3 958 (1000-3)	

NC-1, 03 DEC 2020 to 31 DEC 2020

NC-1, 03 DEC 2020 to 31 DEC 2020