

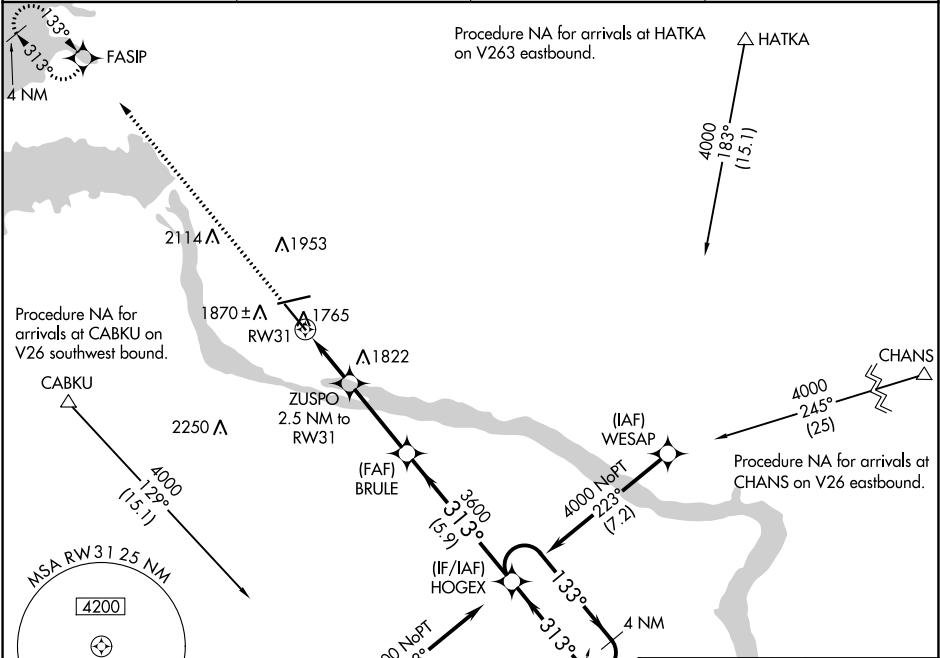
WAAS CH <b>65623</b> <b>W31A</b>	APP CRS <b>313°</b>	Rwy Idg TDZE Apt Elev	<b>6900</b> <b>1720</b> <b>1744</b>
--	------------------------	-----------------------------	---

RNAV (GPS) RWY 31

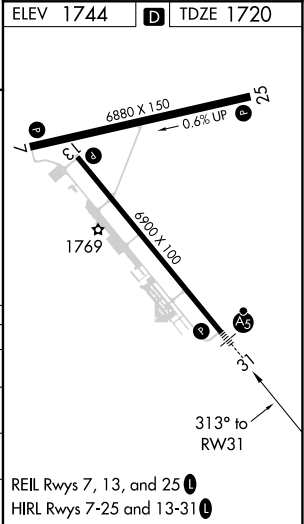
PIERRE RGNL (PIR)

RNP APCH.	MALSR	MISSED APPROACH: Climb to 4000 direct FASIP and hold.
▼ For uncompensated Baro-VNAV systems, LNAV/VNAV NA below -26°C or above 54°C. For inoperative ALS, increase LNAV/VNAV all Cats visibility to ¾ SM.		

ASOS <b>119.025</b>	MINNEAPOLIS CENTER <b>125.1 269.1</b>	CTAF <b>122.70</b>	UNICOM <b>122.95</b>
------------------------	--	-----------------------	-------------------------



4000	FASIP	ZUSPO 2.5 NM to RW31	BRULE 3600	HOGEX 4 NM Holding Pattern	6000 4000	GP 3.00° TCH 56
*LNAV only	*1 NM to RW31	2560*	3600	133° 313°		
1 NM	1.5 NM	3.2 NM	5.9 NM			
CATEGORY	A	B	C	D		
LPV DA	1920-½	200 (200-½)				
LNAV/VNAV DA	1970-½	250 (300-½)				
LNAV MDA	2020-½	300 (300-½)				
CIRCLING	2240-1 496 (500-1)	2300-1 556 (600-1)	2400-1¾ 656 (700-1¾)	2460-2¼ 716 (800-2¼)		



NC-1, 03 DEC 2020 to 31 DEC 2020

NC-1, 03 DEC 2020 to 31 DEC 2020