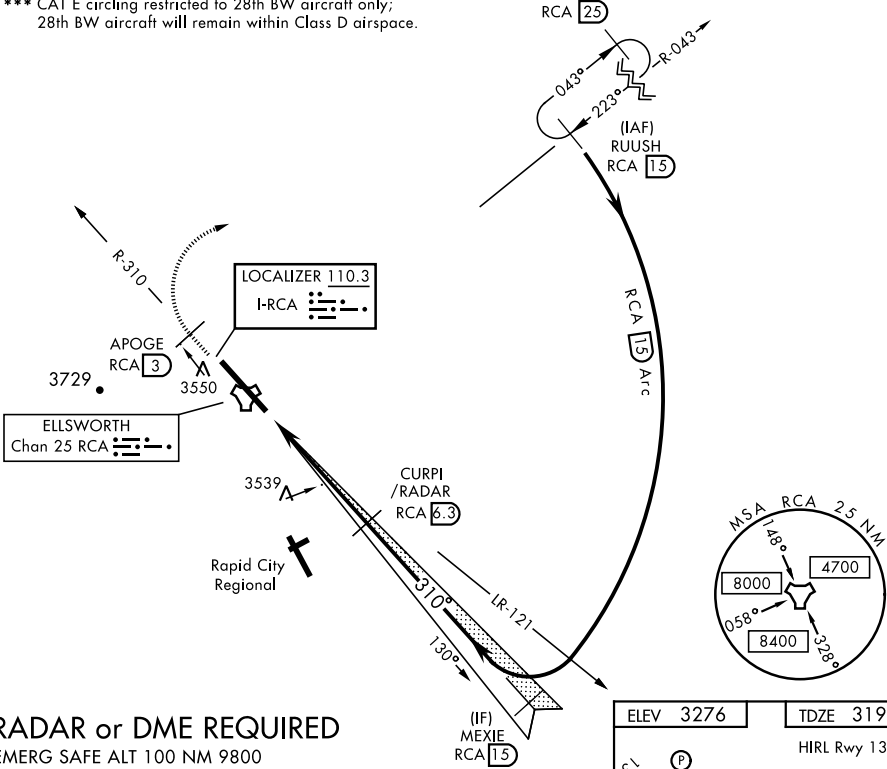


RAPID CITY, SOUTH DAKOTA

ILS or LOC Y RWY 31

LOC I-RCA <b>110.3</b>	APCH CRS <b>310°</b>	Rwy Idg <b>13,497</b> TDZE <b>3192</b> Arpt Elev <b>3276</b>	AL-343 [USAF]	ELLSWORTH AFB (KRCA)
* When ALS inop, increase RVR to 40 and vis to ¾ mile. ** When ALS inop, increase CAT AB RVR to 55 and vis to 1 mile, CAT CDE vis to 1¾ miles.			ALSF-1 	MISSED APPROACH: Track outbound RCA R-310 to 3 DME (APOGE), then turn right to join RCA R-043 outbound to RCA 1.5 DME (RUUSH) and hold. Maintain 6000.
ATIS ★ <b>120.625 269.9</b>	ELLSWORTH APP CON <b>119.5 259.1</b>	ELLSWORTH TOWER ★ <b>126.05 253.5</b>	GND CON <b>121.8 275.8</b>	

\*\*\* CAT E circling restricted to 28th BW aircraft only;  
28th BW aircraft will remain within Class D airspace.



RADAR or DME REQUIRED

EMERG SAFE ALT 100 NM 9800

<div><div>APOGE RCA R-310</div><div>3</div></div>		<div><div>6000</div><div>RCA R-043</div></div>		<div><div>RUUSH RCA</div><div>15</div></div>		VGSI and ILS glidepath not coincident (VGSI Angle 3.00 TCH 70).					
↑ LOC Only											
TACAN		OPOGE 1.3		CURPI /RADAR 6.3		Intcp Lczt 15		MEXIE 15		RUUSH R-043 15	
		2.5		310°		6000		6000			
				5000		Arc 15		GS 3.00° TCH 54			
.5 NM		5 NM									
CATEGORY		A		B		C		D		E	
S-ILS 31 *		3392/24		200		(200-½)					
S-LOC 31 **		3800/24		608 (600-½)		3800-1¾		608 (600-1¾)			
*** CIRCLING		3860-1 584 (600-1)		3880-1 604 (700-1)		3880-1¾ 604 (700-1¾)		3980-2¼ 704 (800-2¼)		4040-2¾ 764 (800-2¾)	

RAPID CITY, SOUTH DAKOTA

44°09'N-103°06'W

ELLSWORTH AFB (KRCA)

Amtd 1 15SEP16

ILS or LOC Y RWY 31

NC-1, 03 DEC 2020 to 31 DEC 2020

NC-1, 03 DEC 2020 to 31 DEC 2020