

RAPID CITY, SOUTH DAKOTA

TACAN-A

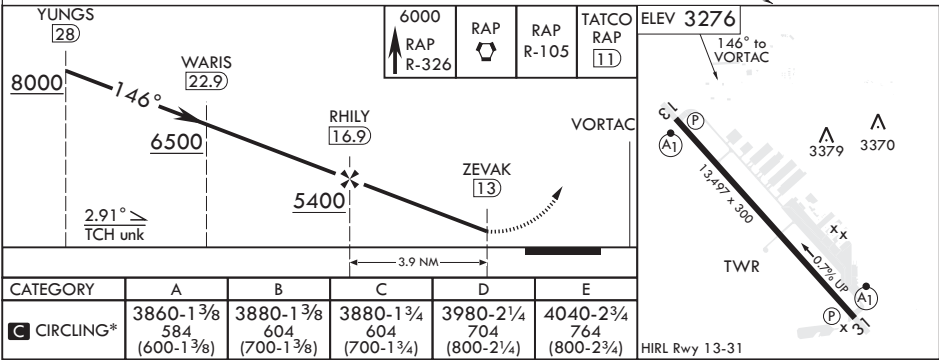
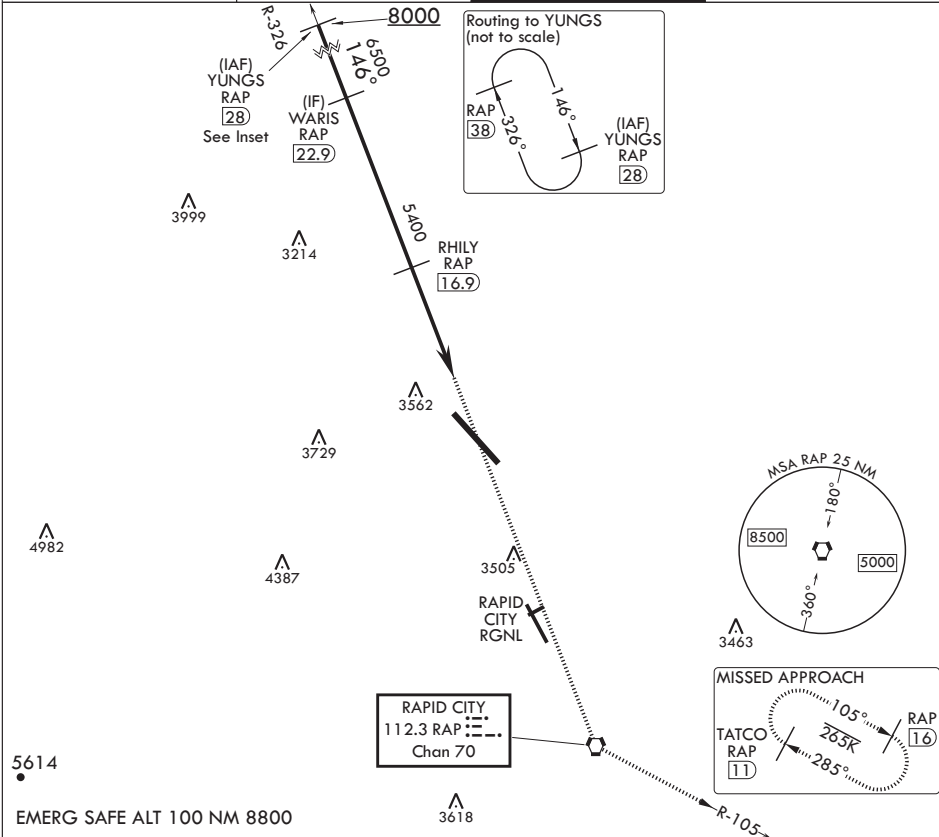
VORTAC RAP 112.3 Chan 70	APCH CRS 146°	Rwy Idg TDZE Arprt Elev	N/A N/A 3276
--------------------------------	------------------	-------------------------------	--------------------

AL-343 (USAF)

ELLSWORTH AFB (KRCA)

<b>⚠</b> * CAT E circling restricted to 28th BW aircraft only; 28th BW aircraft will remain within Class D airspace.	MISSED APPROACH: Track inbound RAP R-326 to RAP VORTAC then turn left to join RAP R-105 outbound to 11 DME and hold. Maintain 6000.
--	---

ATIS★ 120.625 269.9	APP CON 119.5 259.1	TOWER★ 126.05 253.5	GND CON 121.8 275.8
------------------------	------------------------	------------------------	------------------------



RAPID CITY, SOUTH DAKOTA

44°09'N - 103°06'W

ELLSWORTH AFB (KRCA)

Amdt 2 22JUN17

TACAN-A

NC-1, 03 DEC 2020 to 31 DEC 2020

NC-1, 03 DEC 2020 to 31 DEC 2020