

TACAN Y RWY 13

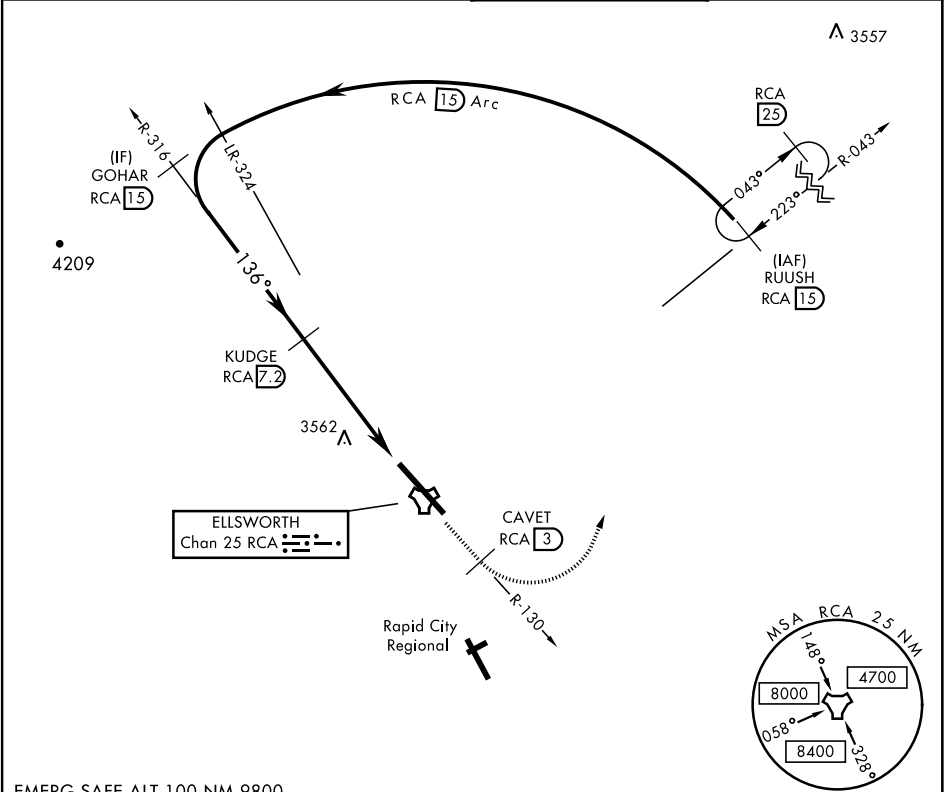
TACAN RCA Chan 25	APCH CRS 136°	Rwy Idg 13.497 TDZE 3276 Arpt Elev 3276	AL-343 [USAF]	ELLSWORTH AFB (KRCA)
----------------------	------------------	---	---------------	----------------------

▼ \*When ALS inop, increase CAT AB RVR to 55 and vis to 1 mile, CAT CDE vis to 1½ miles.  
\*\*CAT E circling restricted to 28th BW aircraft only; 28th BW aircraft will remain within Class D airspace.

ALSF-1  
(A1)

MISSED APPROACH: Track outbound RCA R-130 to 3 DME (CAVET), then turn left to join RCA R-043 to RCA 15 DME (RUUSH) and hold. Maintain 6000.

ATIS ★ 120.625 269.9	ELLSWORTH APP CON 119.5 259.1	ELLSWORTH TOWER ★ 126.05 253.5	GND CON 121.8 275.8
-------------------------	----------------------------------	-----------------------------------	------------------------



EMERG SAFE ALT 100 NM 9800

RUUSH R-043 15, GOHAR R-316 15, KUDGE 7.2, TACAN, TUTGE 1.9, CAVET RCA R-130 3, RCA R-043, RUUSH RCA 15

6000, 5200, 5.3 NM, 5 NM

3.05° TCH 62, 136° to TACAN, 13.497-300, 0.2% DOWN, 31

CATEGORY	A	B	C	D	E
S-13*	3820/24	544 (600-½)	3820/60	544	(600-1½)
CIRCLING**	3860-1 584 (600-1)	3880-1 604 (700-1)	3880-1¾ 604 (700-1¾)	3980-2¼ 704 (800-2¼)	4040-2¾ 764 (800-2¾)

ELEV 3276, TDZE 3276

TWR, HIRL Rwy 13-31

TACAN Y RWY 13

NC-1, 03 DEC 2020 to 31 DEC 2020

NC-1, 03 DEC 2020 to 31 DEC 2020