

WAAS CH 40135 W33A	APP CRS 330°	Rwy Idg 8000 TDZE 1424 Apt Elev 1430
--	------------------------	---

RNAV (GPS) RWY 33
JOE FOSS FIELD (FSD)

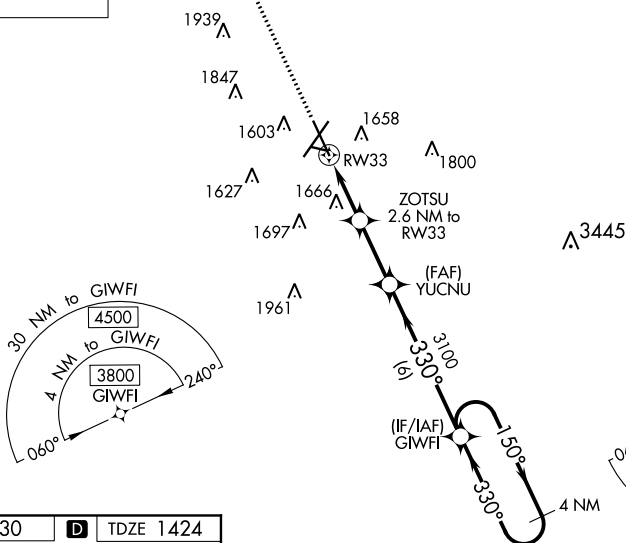
T
ASR
❄ -31°C

For uncompensated Baro-VNAV systems, procedure NA below -22°C (-7°F) or above 54°C (130°F). Rwy 33 helicopter visibility reduction below $\frac{3}{4}$ SM NA. DME/DME RNP-0.3 NA.

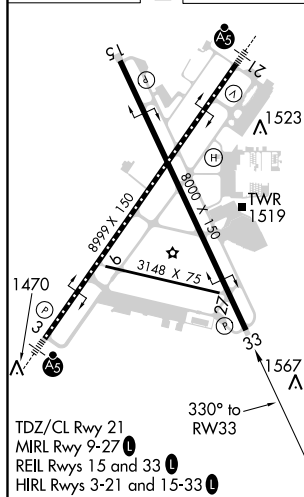
MISSED APPROACH:
Climb to 3800 direct
CEPOL and hold.

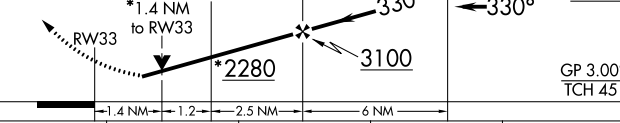
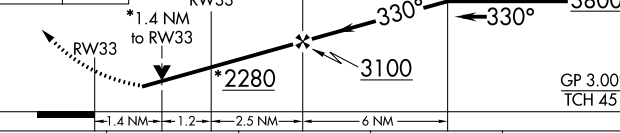

ATIS 126.6	SIoux FALLS APP CON ★ 125.8 284.725	SIoux FALLS TOWER ★ 118.3 (CTAF) 0 257.8	GND CON 121.9 348.6	UNICOM 122.95
---------------	--	---	------------------------	------------------

MISSED APCH FIX



ELEV 1430	D	TDZE 1424
-----------	----------	-----------



3800 ↑	CEPOL 	*LNAV only. ZOTSU 2.6 NM to RW33 YUCNU 3100 GIWFI 4 NM Holding Pattern			
		GP 3.00° TCH 45°			
CATEGORY	A	B	C	D	
LPV DA	1729-1		305 (300-1)		
LNAV/ VNAV DA	1974-1⅞		550 (600-1⅞)		
LNAV MDA	1920-1	496 (500-1)	1920-1⅜	496 (500-1⅜)	
 CIRCLING	1960-1 530 (600-1)	1980-1 550 (600-1)	2060-1¾ 630 (700-1¾)	2200-2½ 770 (800-2½)	