

WAAS CH 53405 W12A	APP CRS 118°	Rwy Idg TDZE 1749 Apt Elev 1749
--	------------------------	---

RNAV (GPS) RWY 12
WATERTOWN RGNL (ATY)

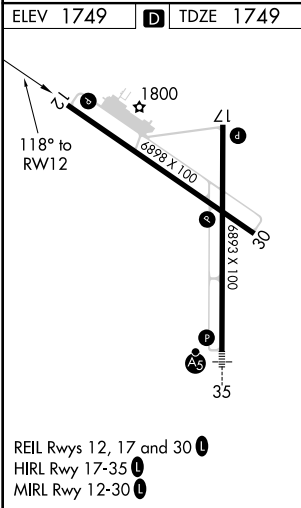
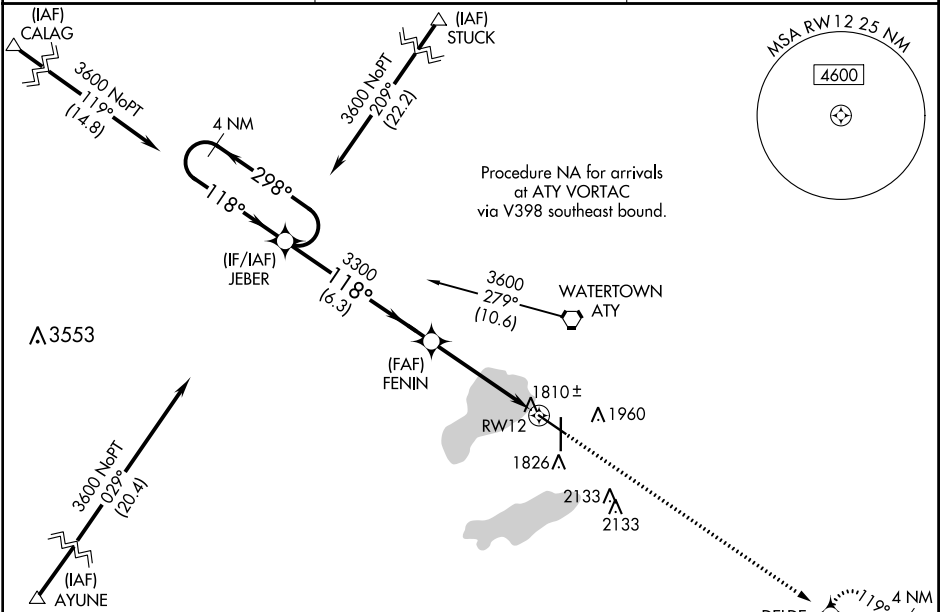
RNP APCH.

▼
▲

For uncompensated Baro-VNAV systems, LNAV/VNAV NA below -18°C (0°F) or above 45°C (113°F). Rwy 12 helicopter visibility reduction below ¾ SM NA. When local altimeter setting not received, use Brookings altimeter setting and increase all DA 105 feet and all MDA 120 feet, increase LNAV Cat C and D visibility ¾ SM and Circling Cat C/D visibility ½ SM. VDP NA when using Brookings altimeter setting. Baro-VNAV NA when using Brookings altimeter setting.

MISSED APPROACH:
Climb to 3600 direct
DELDE and hold.

ASOS 126.625	MINNEAPOLIS CENTER 128.5 306.2	UNICOM 123.05 (CTAF) 0
------------------------	--	----------------------------------



4 NM Holding Pattern		JEBER	FENIN	DELDE
3600 ← 298°		118° →	118°	119°
GP 3.00° TCH 48		3300	3600	DELDE
		6.3 NM	3.7 NM	1 NM
CATEGORY	A	B	C	D
LPV DA	2021-1 272 (300-1)			
LNAV/VNAV DA	2076-1¼ 327 (400-1¼)			
LNAV MDA	2100-1 351 (400-1)			
CIRCLING	2260-1 511 (600-1)	2500-2¼ 751 (800-2¼)	2500-2½ 751 (800-2½)	

NC-1, 03 DEC 2020 to 31 DEC 2020

NC-1, 03 DEC 2020 to 31 DEC 2020