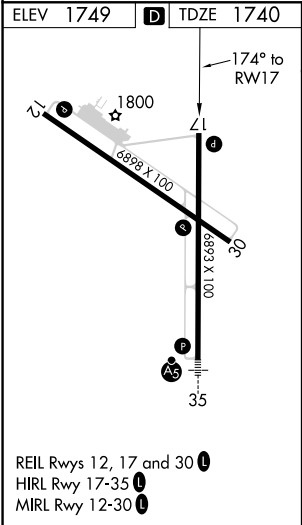
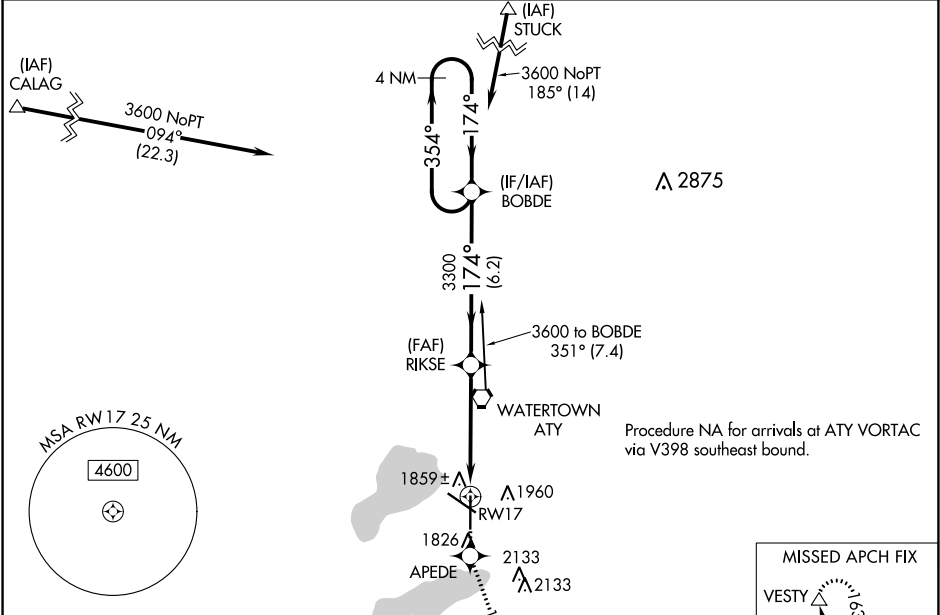


WAAS CH <b>82305</b> <b>W17A</b>	APP CRS <b>174°</b>	Rwy Idg TDZE <b>1740</b> Apt Elev <b>1749</b>	<b>6893</b> <b>1740</b> <b>1749</b>	<b>RNAV (GPS) RWY 17</b> WATERTOWN RGNL (ATY)
--	------------------------	---	---	--

**⚠** Baro-VNAV NA when using Brookings altimeter setting. DME/DME RNP-0.3 NA. For uncompensated Baro-VNAV systems, LNAV/VNAV NA below -18°C (0°F) or above 45°C (113°F). VDP NA when using Brookings altimeter setting. When local altimeter setting not received, use Brookings altimeter setting and increase all DAs 105 feet and all MDAs 120 feet; increase Circling Cat C and D visibility ¼ SM.

MISSED APPROACH: Climb to 4000 direct APEDE and via 154° track to VESTY and hold.

ASOS <b>126.625</b>	MINNEAPOLIS CENTER <b>128.5 306.2</b>	UNICOM <b>123.05 (CTAF) 0</b>
------------------------	--	----------------------------------



4000	APEDE	154° tr	VESTY	VGSI and RNAV glidepath not coincident (VGSI Angle 3.00/TCH 35).	4 NM Holding Pattern
* LNAV only					
* 1.1 NM to RWY 17					
1.1 NM 3.6 NM 6.2 NM					
CATEGORY	A	B	C	D	
LPV DA	2054-1 314 (400-1)				
LNAV/VNAV DA	2129-1¼ 389 (400-1¼)				
LNAV MDA	2120-1 380 (400-1)				2120-1¼ 380 (400-1¼)
<b>C</b> CIRCLING	2260-1 511 (600-1)		2500-2¼ 751 (800-2¼)		2500-2½ 751 (800-2½)