

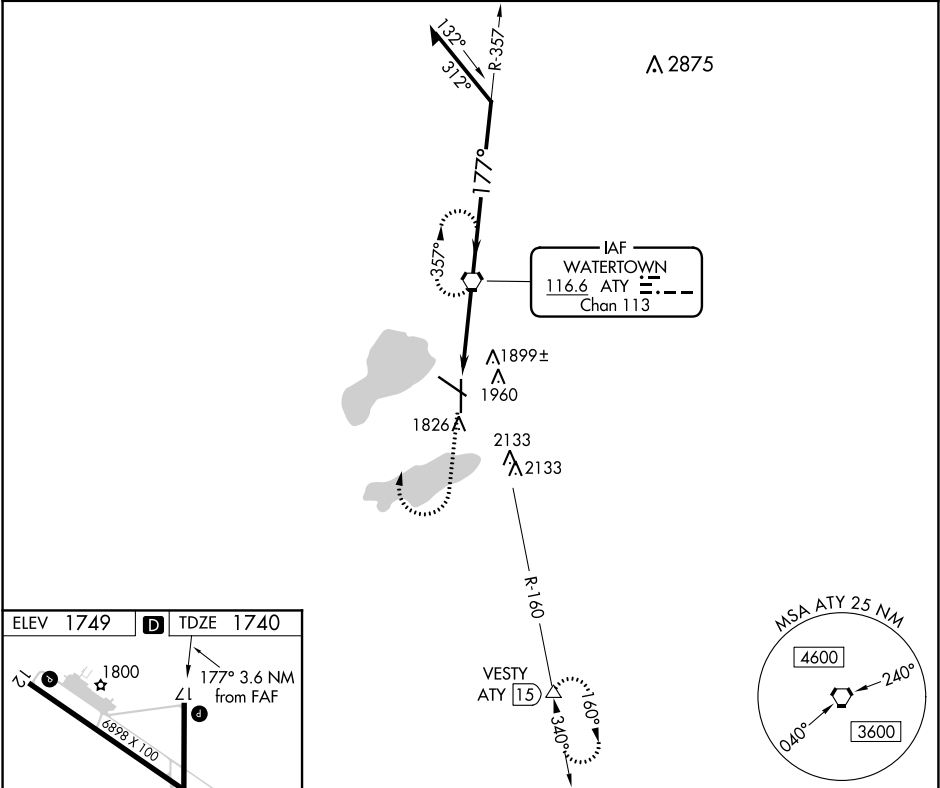
VORTAC ATY	APP CRS	Rwy Idg	6893
116.6	177°	TDZE	1740
Chan 113		Apt Elev	1749

VOR or TACAN RWY 17
WATERTOWN RGNL (ATY)

⚠ Visibility reduction by helicopters NA. When local altimeter setting not received, use Brookings altimeter setting and increase all MDAs 120 feet; increase Circling Cat C and D visibility ¼ SM. VDP NA when using Brookings altimeter setting.

MISSED APPROACH: Climb to 2400 then climbing right turn to 4000 direct ATY VORTAC and hold. (TACAN aircraft climb to 5000 via ATY VORTAC R-160 to VESTY/15 DME and hold south, right turns, 340° inbound.)

ASOS 126.625	MINNEAPOLIS CENTER 128.5 306.2	UNICOM 123.05 (CTAF) 📻
-----------------	-----------------------------------	----------------------------------



ELEV 1749	D	TDZE 1740
-----------	----------	-----------

1800

177° 3.6 NM from FAF

6893 X 100

6893 X 100

35

REIL Rwy 12, 17 and 30 **📻**

HIRL Rwy 17-35 **📻**

MIRL Rwy 12-30 **📻**

FAF to MAP 3.6 NM

Knots	60	90	120	150	180
Min:Sec	3:36	2:24	1:48	1:26	1:12

2400	4000	ATY	ATY VORTAC	VGSI and descent angles not coincident (VGSI Angle 3.00/TCH 35). Remain within 10 NM
------	------	-----	------------	---

357°

177°

4000

3000

3.21° TCH 45

1.3 NM

2.2 NM

CATEGORY	A	B	C	D
S-17	2200-1	460 (500-1)	2200-1¼ 460 (500-1¼)	2200-1½ 460 (500-1½)
📻 CIRCLING	2260-1	511 (600-1)	2500-2¼ 751 (800-2¼)	2500-2½ 751 (800-2½)

NC-1, 03 DEC 2020 to 31 DEC 2020

NC-1, 03 DEC 2020 to 31 DEC 2020