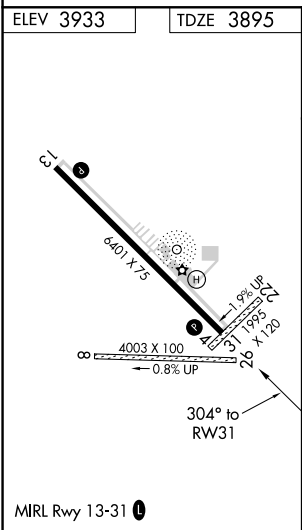
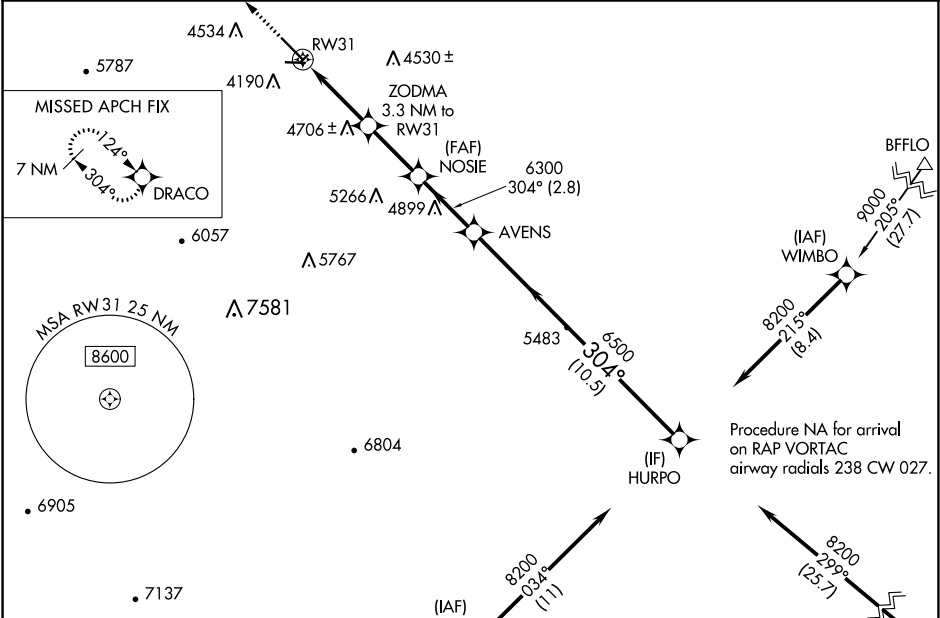


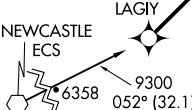
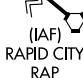



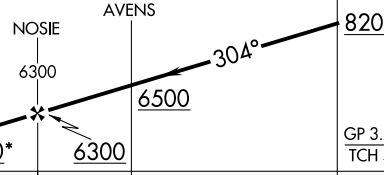

WAAS CH <b>77821</b> <b>W31A</b>	APP CRS <b>304°</b>	Rwy Idg TDZE Apt Elev	<b>6401</b> <b>3895</b> <b>3933</b>
--	------------------------	-----------------------------	---

RNAV (GPS) RWY 31

BLACK HILLS-CLYDE ICE FIELD (SPF)

RNP APCH.		MISSED APPROACH: Climb to 7000 direct DRACO and hold.	
▼ ▲ Circling NA to Rwys 4, 8, 22 and 26.			
AWOS-3 <b>118.325</b>	ELLSWORTH APP CON <b>119.5 259.1</b>	GCO <b>121.725</b>	UNICOM <b>122.7 (CTAF) 0</b>



					
7000 	DRACO 	VGSi and RNAV glidepath not coincident (VGSi Angle 3.00/TCH 50).			
* LNAV only 					
RW31 ZODMA 3.3 NM to RW31 5260*		NOSIE 6300	AVENS 6500		
3.3 NM		2.6 NM	2.8 NM		
CATEGORY		A	B	C	D
LPV	DA	4281-1½ 386 (400-1½)			NA
LNAV	MDA	4860-1¼ 965 (1000-1½)	4860-1½ 965 (1000-1½)	4860-3 965 (1000-3)	NA
 CIRCLING		4860-1¼ 927 (1000-1½)	4860-1½ 927 (1000-1½)	5540-3 1607 (1700-3)	NA