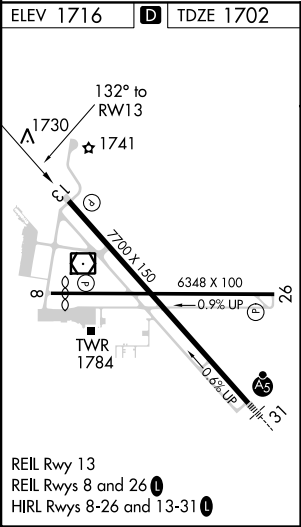
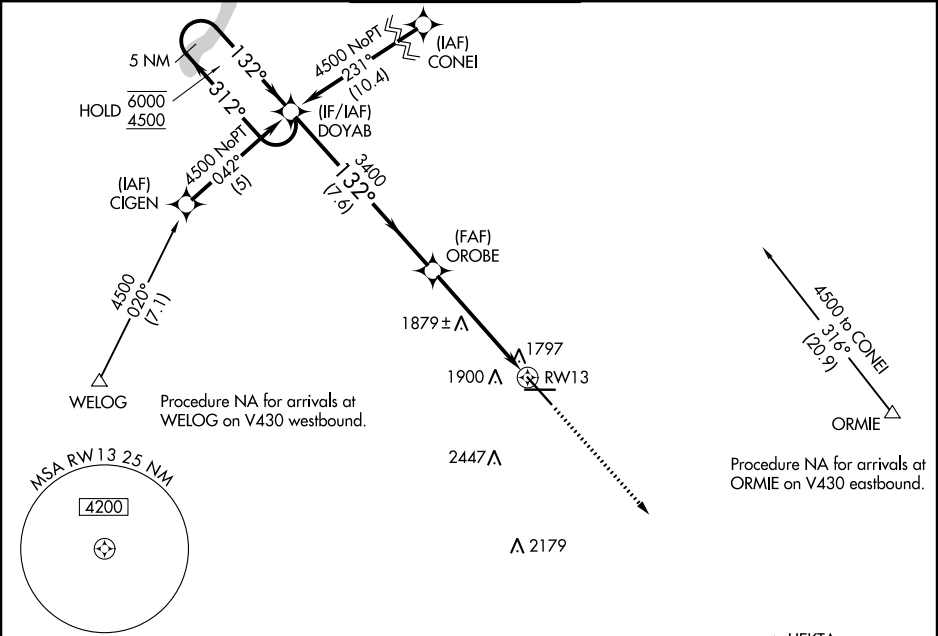


WAAS CH 70399 W13A	APP CRS 132°	Rwy Idg TDZE Apt Elev	7700 1702 1716
--	------------------------	-----------------------------	---

RNAV (GPS) RWY 13
MINOT INTL (MOT')

RNP APCH.	MISSED APPROACH: Climb to 4000 direct HEKTA and hold.
For uncompensated Baro-VNAV systems, LNAV/VNAV NA below -18°C or above 54°C.	

ASOS 118.725	MINOT APP CON * 119.6 363.8	MAGIC CITY TOWER * 118.2 (CTAF) 0 251.125	GND CON 121.9	UNICOM 122.95
------------------------	---------------------------------------	---	-------------------------	-------------------------



ELEV 1716		D TDZE 1702	
3149		3147	
5 NM Holding Pattern		DOYAB	
6000 ← 312°		3400	
4500 → 132°		3400	
GP 3.00°		TCH 49	
7.6 NM		3.9 NM	
1.2 NM		1.2 NM	
*1.2 NM to RW13		*LNAV only.	
RW13		RW13	
CATEGORY		A B C D	
LPV DA		2021-1 319 (400-1)	
LNAV/VNAV DA		2181-1 3/4 479 (500-1 3/4)	
LNAV MDA		2140-1 438 (500-1) 2140-1 1/4 438 (500-1 1/4) 2140-1 1/2 438 (500-1 1/2)	
CIRCLING		2200-1 484 (500-1) 2280-1 1/2 564 (600-1 1/2) 2280-2 564 (600-2)	

NC-1, 03 DEC 2020 to 31 DEC 2020

NC-1, 03 DEC 2020 to 31 DEC 2020