

|  |                        |   |
|--|------------------------|---|
| WAAS<br>CH <b>78434</b><br><b>W12A</b> | APP CRS<br><b>121°</b> | Rwy Idg <b>3998</b><br>TDZE <b>2209</b><br>Apt Elev <b>2209</b> |
|--|------------------------|---|

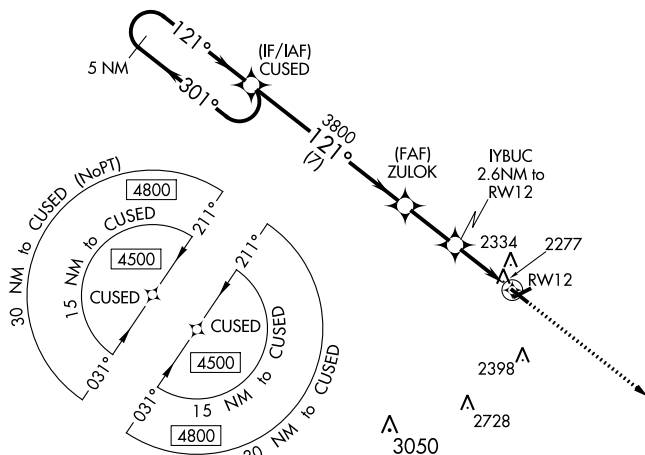
RNAV (GPS) RWY 12  
PHILP (PHP)

PHIIP (PHP)

**▼** DME/DME RNP-0.3 NA. When local altimeter setting not received, use Pierre altimeter setting and increase all DA 204 feet and MDA 220 feet and increase LPV and LNAV/VNAV all Cots visibility  $\frac{1}{2}$  mile, increase LNAV COT visibility  $\frac{1}{2}$  mile, and increase Circling COT C visibility  $\frac{3}{4}$  mile. Helicopter visibility reduction below 1 SM NA. Procedure NA at night. For uncompensated Baro-VNAV systems, LNAV/VNAV NA below -14°C (7°F) or above 54°C (130°F). Baro-VNAV NA when using Pierre altimeter setting.

**MISSED APPROACH:** Climb to 4500 direct UTMYY and hold.

|                        |                                      |                                 |
|------------------------|--------------------------------------|---------------------------------|
| ASOS<br><b>118.375</b> | DENVER CENTER<br><b>127.95 338.2</b> | UNICOM<br><b>122.8 (CTAF) 0</b> |
|------------------------|--------------------------------------|---------------------------------|



NC-1, 03 DEC 2020 to 31 DEC 2020

PHILIP, SOUTH DAKOTA  
Orig-A 21AUG14

44°03'N-101°36'W

PHILIP (PHP)  
RNAV (GPS) RWY 12

PHILIP (PHP)