

WAAS CH 73036 W12A	APP CRS 115°	Rwy Idg 6000 TDZE 1621 Apt Elev 1648
--	------------------------	---

RNAV (GPS) RWY 12
BROOKINGS RGNL (BKK)

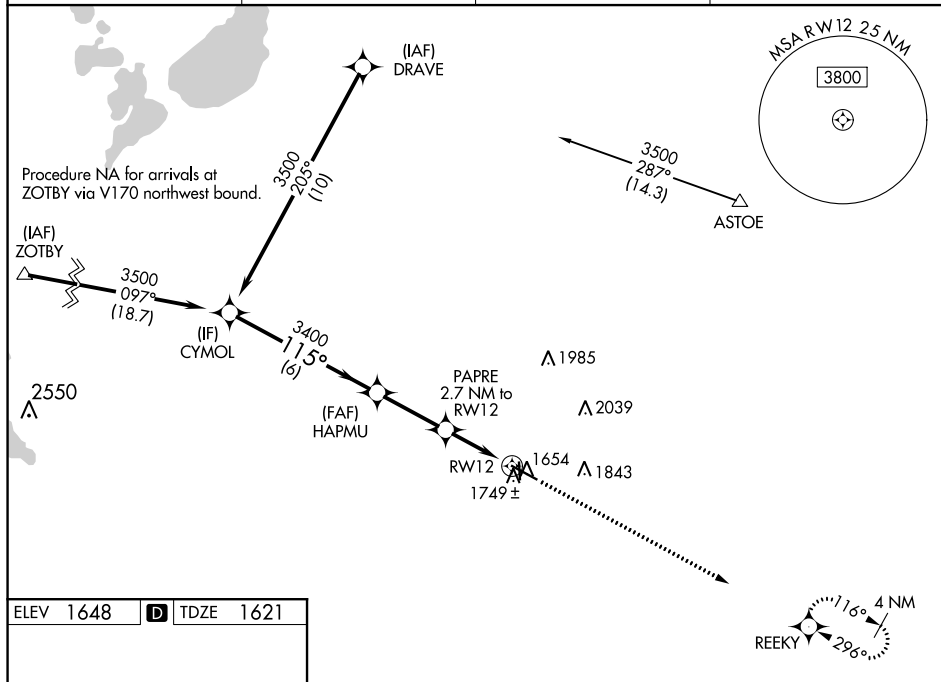
▼ For uncompensated Baro-VNAV systems, LNAV/VNAV NA below -18°C (0°F) or above 54°C (130°F). DME/DME RNP-0.3 NA. When local altimeter setting not received, use
▲ Pipestone altimeter setting and increase all DA 81 feet and all MDA 100 feet; increase LNAV/VNAV all Cats visibility ¼ mile; LNAV Cats C and D visibility ⅓ mile; Circling Cats C and D visibility ¼ mile. Baro-VNAV and VDP NA when using Pipestone altimeter setting. Night landing Rwy 17 NA.

MALSR

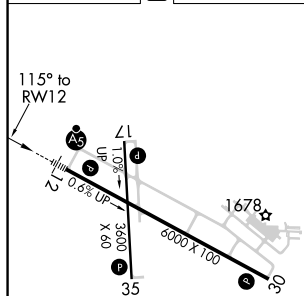


MISSED APPROACH:
Climb to 3500 direct
REEKY and hold.

AWOS-3PT 119.925	MINNEAPOLIS CENTER 132.05 317.4	GCO 121.725	UNICOM 123.0 (CTAF) ①
----------------------------	---	-----------------------	---------------------------------



ELEV 1648	D	TDZE 1621
-----------	----------	-----------



HIRL Rwy 12-30 **L**
MIRL Rwy 17-35 **L**
REIL Rwy 17, 30 and 35 **L**

Diagram illustrating a 4-segment RNAV approach. Key locations and altitudes are marked: CYMOL (3500), HAPMU (3400), PAPRE (2500), and RW12 (2340). Distances between segments are 6 NM, 2.8 NM, 1.6 NM, and 1.1 NM. A 115° angle is indicated between the first two segments. A 1.1 NM offset to RW12 is shown. A 3.00° track angle (TCH 50) is noted for the first segment. A 3500-foot altitude is also marked near REEKY. A note indicates '* LNAV only.'