

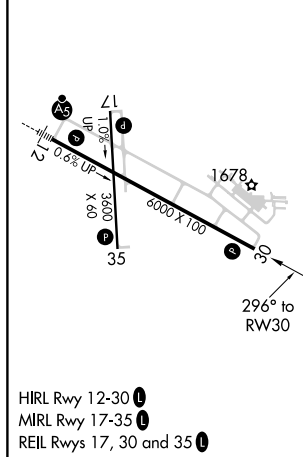
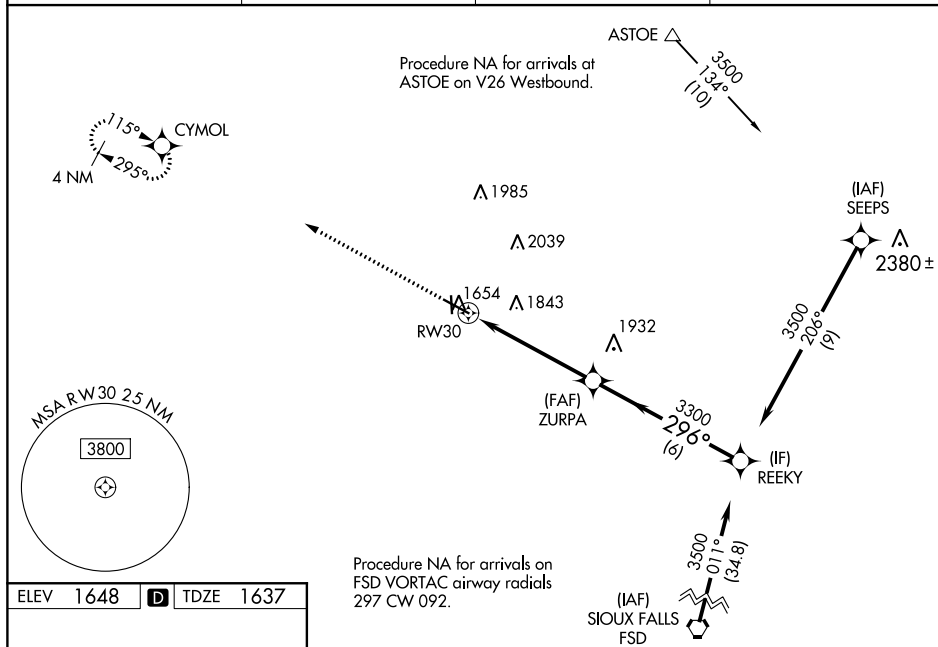
| | | |
|--|------------------------|---|
| WAAS CH 82736 W30A | APP CRS 296° | Rwy Idg 6000 TDZE 1637 Apt Elev 1648 |
|--|------------------------|---|

RNAV (GPS) RWY 30
BROOKINGS RGNL (BXX)

For uncompensated Baro-VNAV systems, LNAV/VNAV NA below -18°C (0°F) or above 54°C (130°F). DME/DME RNP-0.3 NA. When local altimeter setting not received, use Pipestone altimeter setting and increase all DA 81 feet and all MDA 100 feet; increase LPV and LNAV all Cats visibility ¼ mile. LNAV/VNAV all Cats visibility and Circling Cats C and D visibility ¼ mile. Baro-VNAV and VDP NA when using Pipestone altimeter setting. Helicopter visibility reduction below 1 SM not authorized. Night landing: Rwy 17 not authorized.

MISSED APPROACH:
Climb to 3500 direct
CYMOL and hold.

| | | | |
|----------------------------|---|-----------------------|--|
| AWOS-3PT 119.925 | MINNEAPOLIS CENTER 132.05 317.4 | GCO 121.725 | UNICOM 123.0 (CTAF) 0 |
|----------------------------|---|-----------------------|--|



VGS1 and RNAV glidepath not coincident
(VGS1 Angle 3.00/TCH 35).

* LNAV only

RW30

ZURPA

REEKY

3500

3300

296°

GP 3.00°
TCH 45

| CATEGORY | A | B | C | D |
|-------------------|-----------------------|-----------------------|-----------------------|-------------------------|
| LPV DA | | 1887-1 | 250 (300-1) | |
| LNAV/VNAV DA | | 1968-1½ | 331 (400-1½) | |
| LNAV MDA | 2080-1 | 443 (500-1) | 2080-1¾ | 443 (500-1¾) |
| C CIRCLING | 2140-1 492 (500-1) | 2160-1 512 (600-1) | 2340-2 692 (700-2) | 2340-2¼ 692 (700-2¼) |