

GRAND FORKS, NORTH DAKOTA

RNAV (GPS) RWY 17

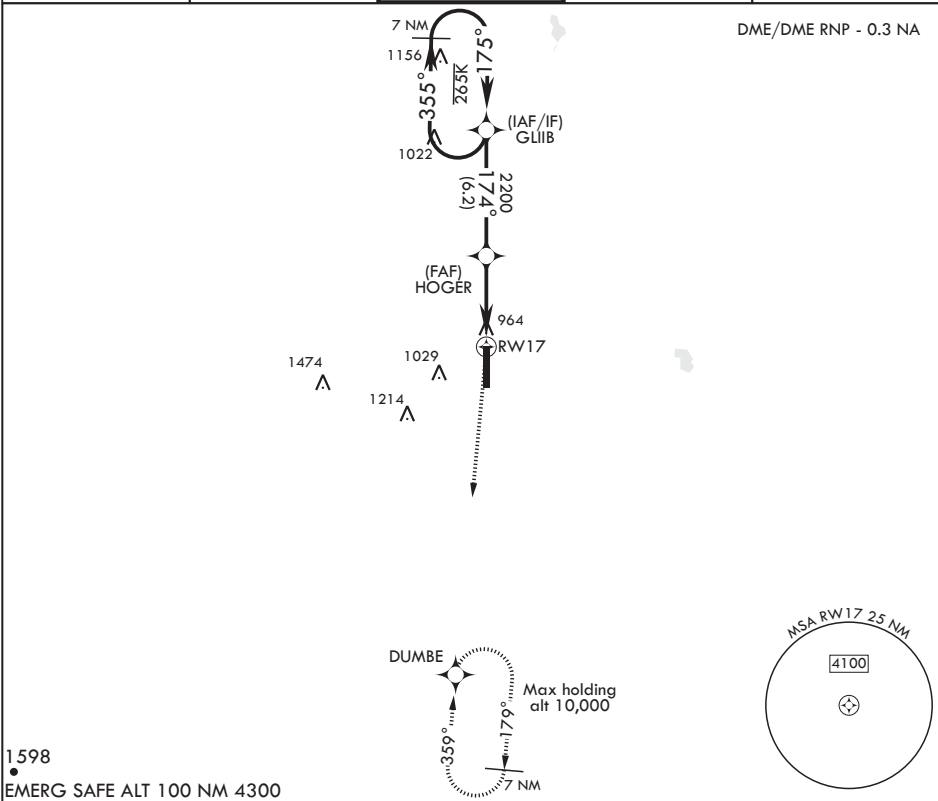
APCH CRS	Rwy Idg	12,351
174°	TDZE	900
	Arpt Elev	911

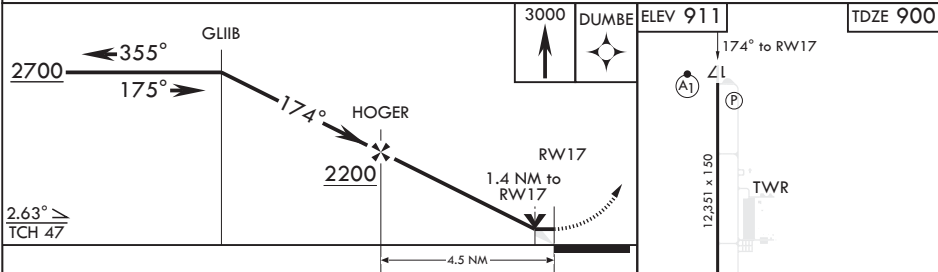
AL-5010 (USAF)

GRAND FORKS AFB (KRDR)

* When ALS inop, increase CAT AB RVR to 55 and vis to 1 mile, CAT CDE vis to 1 1/4 miles. ** Circling E of Rwy 17-35 not authorized.		ALSF-1 	MISSED APPROACH: Climb to 3000 direct DUMBE and hold.
--	--	---	---

ATIS 273.45	APP CON 118.1 318.1	RED RIVER TOWER 124.9 349.0	GND CON 119.15 275.8	CLNC DEL 119.15 360.7
----------------	------------------------	--------------------------------	-------------------------	--------------------------



						
CATEGORY	A	B	C	D	E	
LNAV MDA*	1320/24 420 (500-1/2)		1320/40 420 (500-3/4)			
CIRCLING**	1340-1 429 (500-1)	1380-1 469 (500-1)	1380-1 1/2 469 (500-1 1/2)	1480-2 569 (600-2)	2040-3 1129 (1200-3)	

GRAND FORKS, NORTH DAKOTA

47°58'N - 97°24'W

GRAND FORKS AFB (KRDR)

Orig 20JUL17

RNAV (GPS) RWY 17

NC-1, 03 DEC 2020 to 31 DEC 2020

NC-1, 03 DEC 2020 to 31 DEC 2020